



# visions

INSIDE ARCHITECTURE

TRUE  
CHANGE  
COMES  
FROM THE  
DESIRE TO  
**LOOK  
FURTHER**

I have always wanted to create a pocket door system which is easy to install and will last forever.

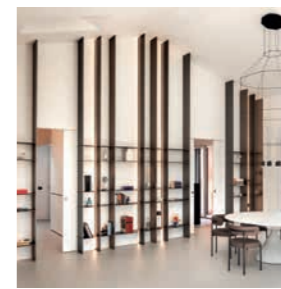
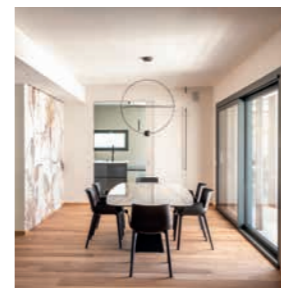
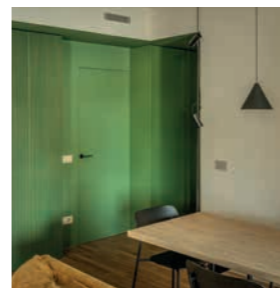
I am inspired by the idea of constantly improving the performance of this product, because I want to satisfy everyone who sells it, installs it and uses it.

This is what drives me and enables me to always Look Further.

Luigi De Faveri - Founder of ECLISSE



# THE PROJECTS



01

**Villa Margherita**

Monza - Italy, 2026  
Architect:  
Alessandra Parolini

p. 6

02

**Casamia**

Cremona - Italy, 2026  
Architect:  
Paolo Gaudenzi

p. 14

03

**Progettare con eleganza**

Milano - Italy, 2026  
Architect:  
Claudia Castelli

p. 22

04

**VM40**

Milano - Italy, 2026  
Architect:  
Paola Cortesi

p. 30

05

**Cromie in dialogo**

Cuneo - Italy, 2025  
Architect:  
Barbara Vucusa

p. 36

06

**Casa Aria**

Monza - Italy, 2025  
Architect:  
Simona Fogalesi

p. 48

07

**Villa G.I.**

Sondrio - Italy, 2025  
Architect:  
Davide Moroni

p. 58



All the projects featured in this book were selected and curated in collaboration with Spazi Belli, the Italian community of architects and designers. Have a look at [spazibelli.com](https://spazibelli.com) or scan the QR code and check out all the projects on the **ECLISSE blog**.





This 1950s house, surrounded by a garden in a residential neighborhood of Monza just outside Milano, is a rare gem that the owners have been searching for a long time.

The renovation was guided by a minimalist vision that aimed for lightness and luminosity, evident both in the design - defined by clean, geometric lines - and in the choice of materials and colours, with ubiquitous oak and neutral tones. The extensive use of light oak was an explicit request from the clients, who initially chose it for the kitchen cabinetry and wanted to extend it throughout the entire home.

In the south-east-facing living area, two full sides open outwards through large floor-to-ceiling windows, created by demolishing the perimeter walls to maximise natural light, filtered only by linen curtains that warm up the room with a natural, textured quality.

The lighting design was developed according to the clients' request for diffused, soft illumination that minimises shadows. This was achieved through recessed spotlights and LED strips, with the exception of the large pendant lights above the living room and kitchen tables, which also serve a decorative purpose.

Unconventionally, due to structural requirements, the ducted cooling system, radiant heating and electrical system were all installed within the ceiling.

01

## Villa Margherita

Monza - Italy, 2026

Architect: Alessandra Parolini

Photographer: Enrico Dal Zotto

### Products

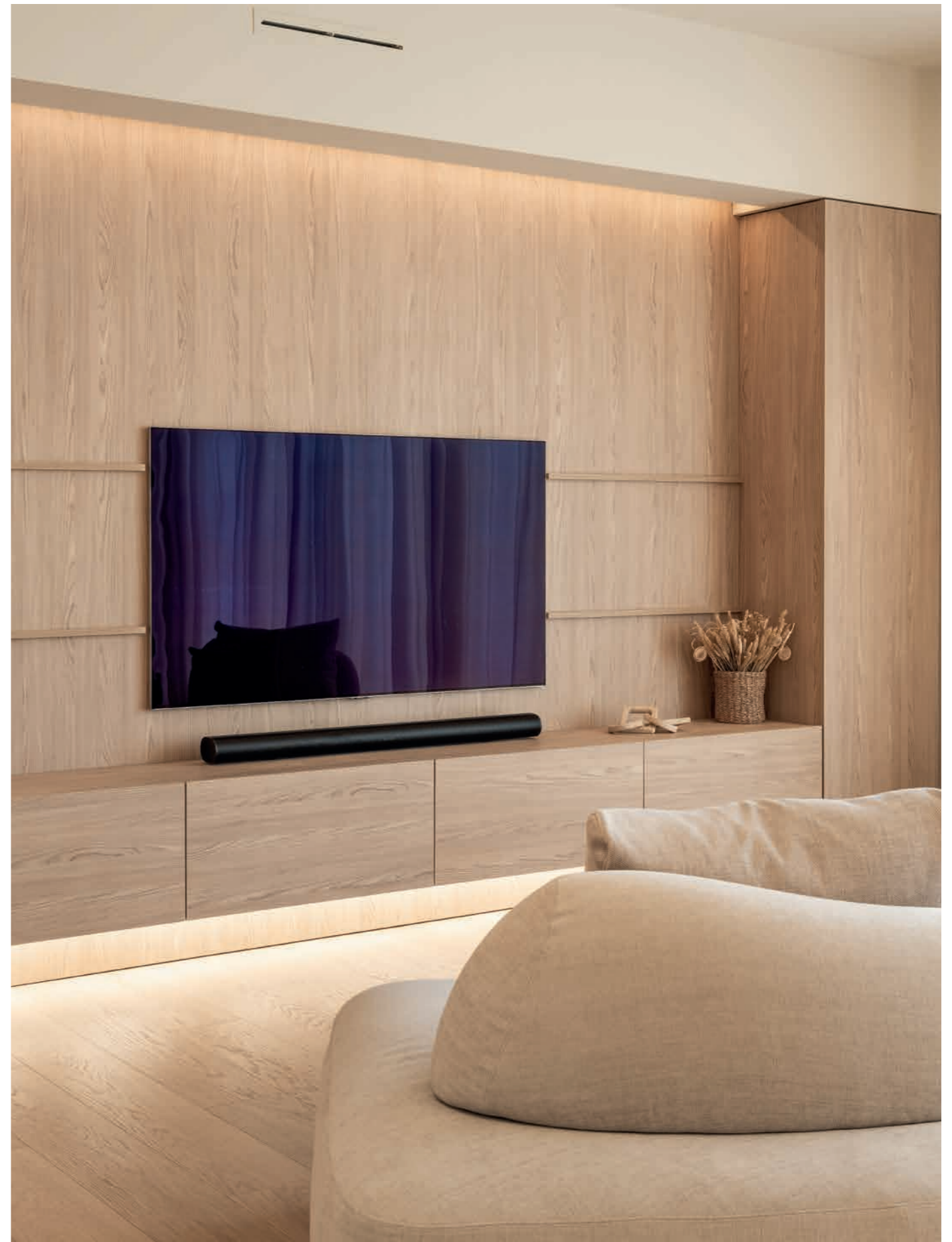
ECLISSE Syntesis Line - flush sliding pocket door with no added joinery

ECLISSE Syntesis Line Double - flush sliding pocket door with no added joinery

ECLISSE Syntesis Line Battente - flush-to-wall swing door



ECLISSE Syntesis Line Double





ECLISSE Syntesis Line and ECLISSE Syntesis Line Battente





In Cremona, a 1960s apartment has been reimagined through a renovation project that blends personal expression with a clear design vision. Casamia is the transformation of the architect's childhood home into a contemporary space that reflects personal identity, fond memories, and a precise architectural language.

The project's central theme is evident at first glance and is defined by the interplay between dark wood, light-coloured architectural concrete, and matte black details. This is not merely an aesthetic choice, but a deliberate approach that shapes the space. The Canaletto walnut used for bespoke furniture introduces warmth and depth, while architectural concrete envelops the interiors with continuous, textured surfaces and black elements - such as handles, switches, sockets, and light fixtures - outline volumes and functions, collectively establishing hierarchies, depth, and contrasts.

The functional areas are defined by volumes and colours, allowing them to either emerge or remain concealed. The kitchen area, for example, is delineated by a diagonal shift in flooring, whilst the laundry is hidden behind a full-height panel that blends seamlessly into the wall.

02

## Casamia

Cremona - Italy, 2026

Architect: Paolo Gaudenzi

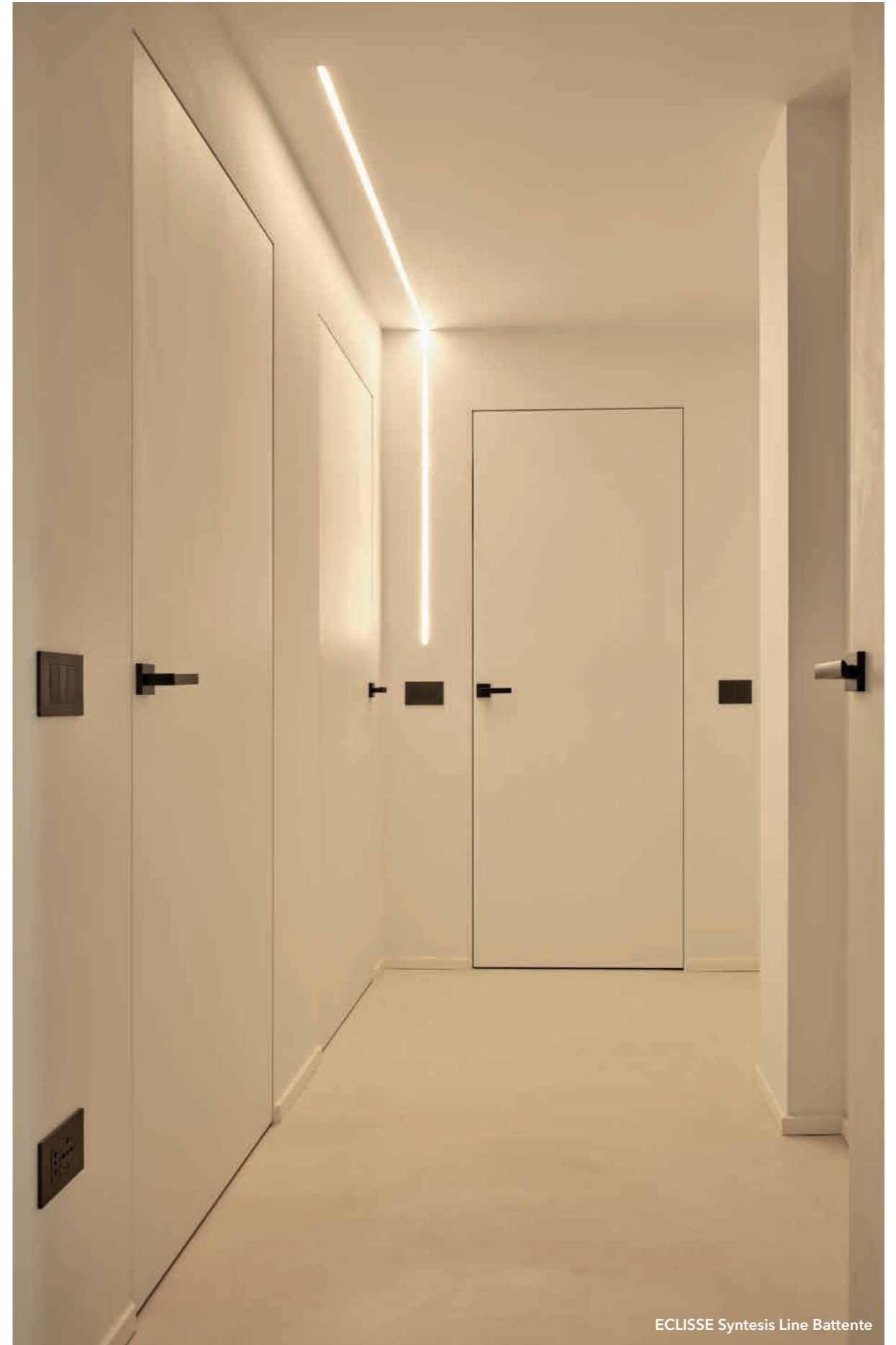
Photographer: Enrico Dal Zotto

### Products

ECLISSE Syntesis Line Battente - flush-to-wall swing door

ECLISSE Syntesis Areo - flush-to-wall access panels









In the heart of Milano, in the Sant'Agostino neighbourhood, a 135 sqm apartment within a 1960s building has been transformed through a renovation project focused on spatial quality, chromatic balance and the optimisation of floor space. The starting point was the need of a family of four to completely rethink the internal layout of their home, prioritising a more open, bright and functional living environment.

As was typical of apartments from that era, the space was fragmented by intrusive partitions that no longer responded to modern living necessities. The project therefore began with the removal of those partitions to create a single, continuous space integrating the entrance hall, living room and kitchen, radically transforming the perception of the interior. The entrance sheds its former corridor-like character and becomes an active part of the living area: no longer just a passageway, but a space that immediately welcomes you into the home, enhanced by a carefully curated colour palette.

The family's personality shines through especially in the finishes, which feature colours and textures that are not oppressive yet bold, such as the parquet flooring running up the wall of the main bathroom or the playful wallpaper in the children's room.

# 03

## Progettare con eleganza

Milano - Italy, 2026

Architect: Claudia Castelli

Photographer: Enrico Dal Zotto

### Products

ECLISSE Syntesis Line - flush sliding pocket door with no added joinery

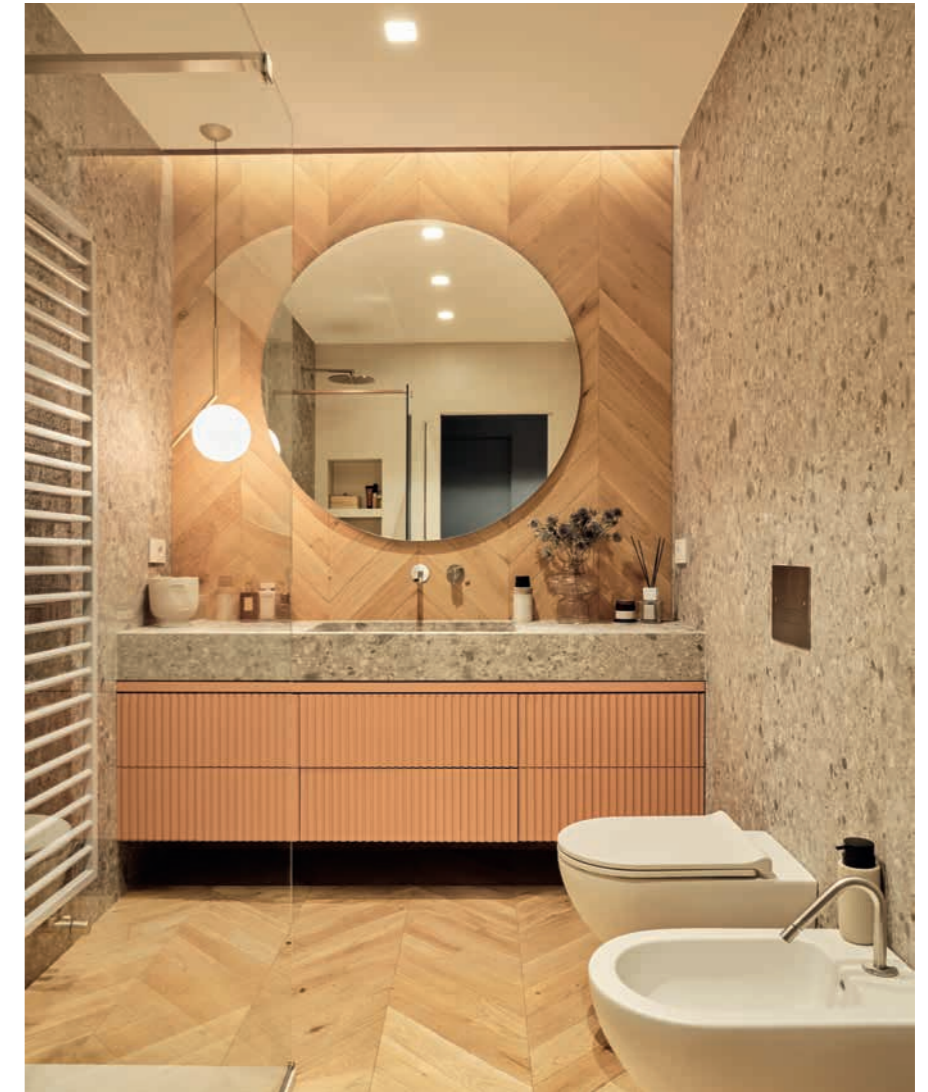
ECLISSE Syntesis Line Battente - flush-to-wall swing door





ECLISSE Syntesis Line Battente







In Milano, a newly built apartment has been designed to meet the needs of a young couple seeking a space with a modern, fluid layout and a distinct personality. The project stems from the desire to create a seamless and dynamic living environment, capable of adapting to the changes of everyday life while providing all the necessary room for wardrobes and shoe storage, a spacious utility closet and a dedicated laundry area.

The interior design is guided by the desire to eliminate rigidity and enhance spatial perception through clean lines, simple geometries and a vibrant yet relaxing and welcoming colour scheme. In the living room, green tones interact harmoniously with the walnut finishes and champagne tones that characterise not only the kitchen cabinetry but also the walls, contributing to a calm and balanced atmosphere.

04

## VM40

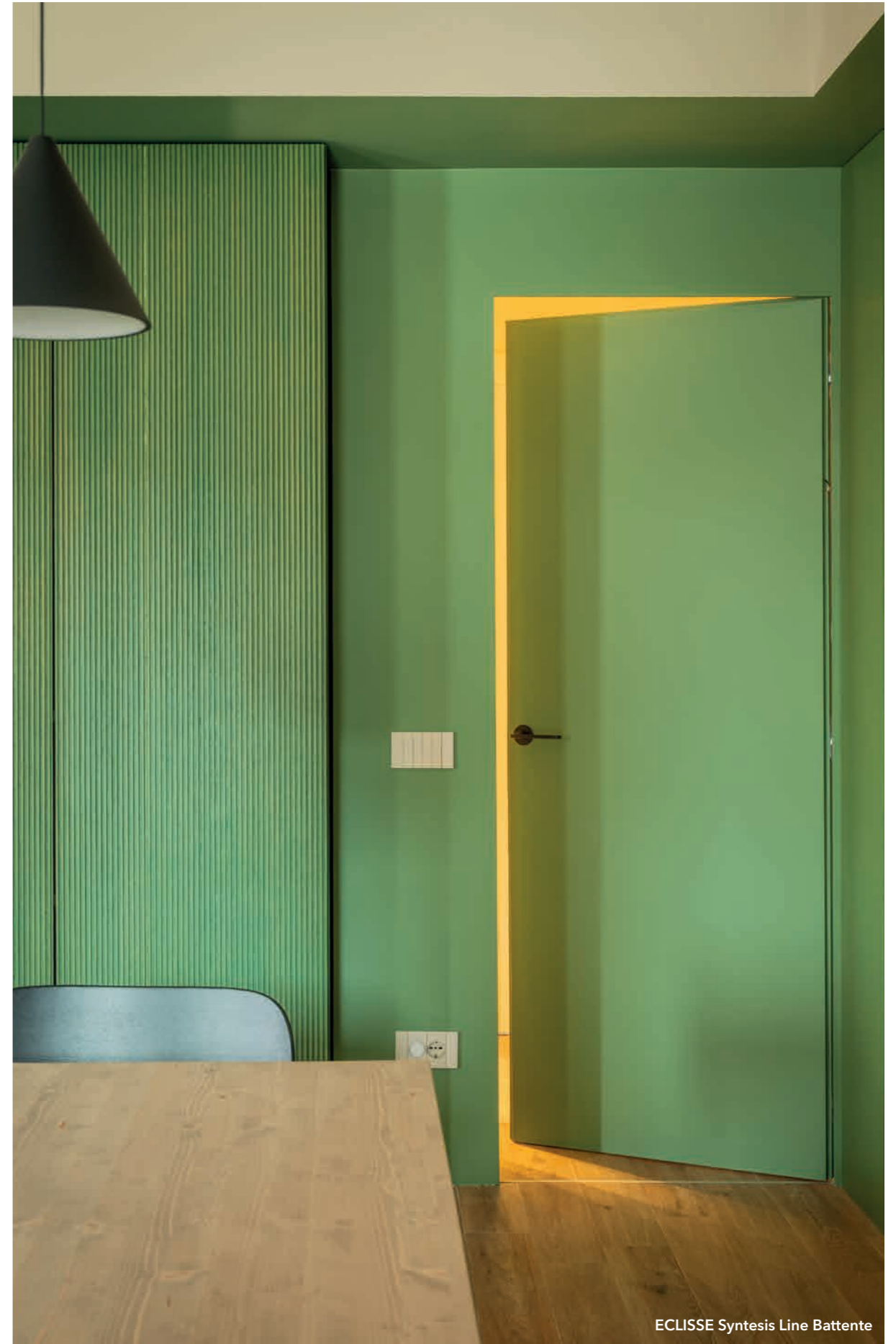
Milano - Italy, 2026

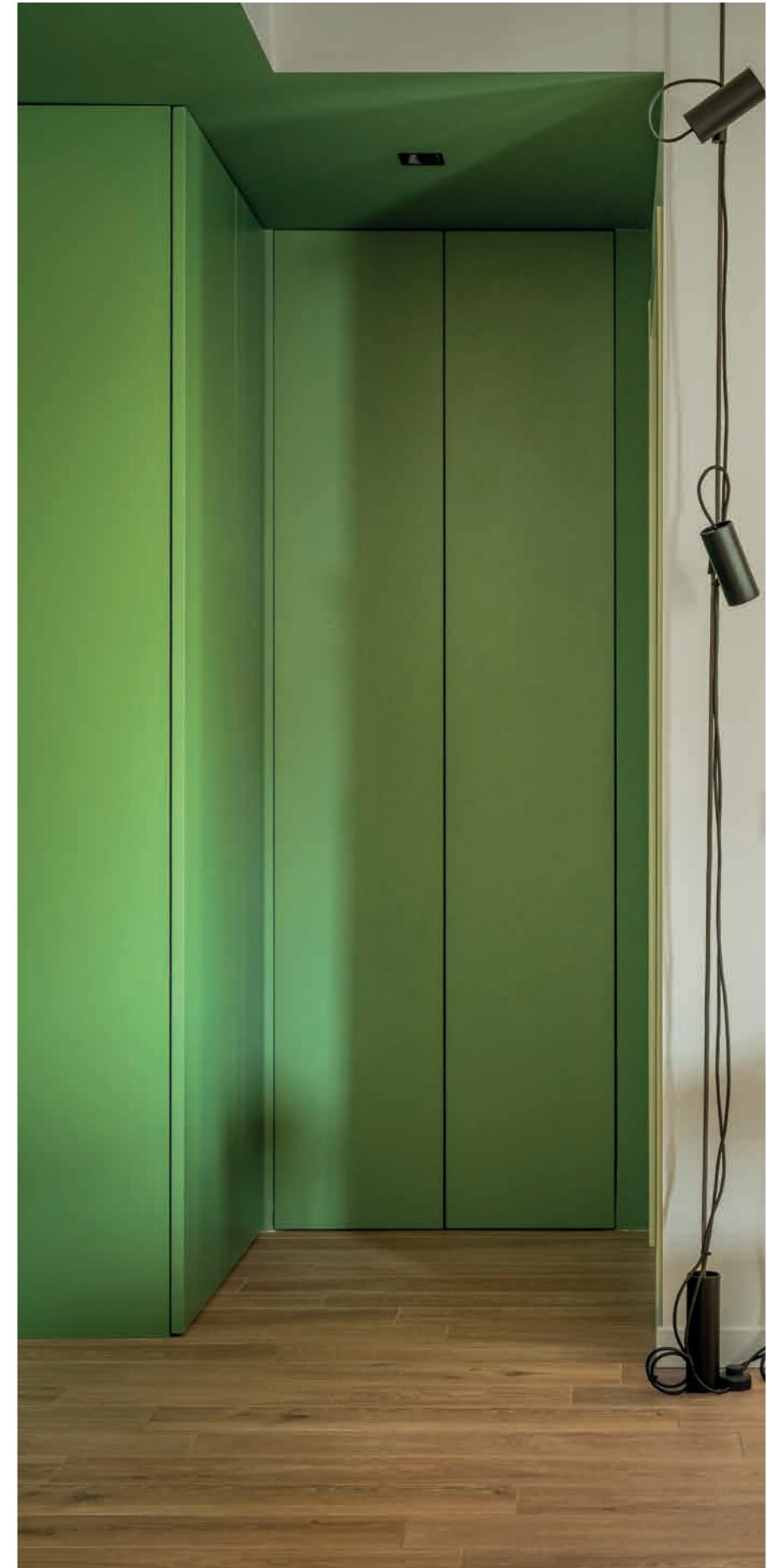
Architect: Paola Cortesi

Photographer: Enrico Dal Zotto

### Products

ECLISSE Syntesis Line Battente - flush-to-wall swing door







Functionality, modernity and design converge in this 250 sqm private villa in north-western Italy. A home rich in character where every design choice emerges from a dialogue between expressive strength and a certain formal rigour.

The predominantly neutral tones of the surfaces act as a backdrop to colours and finishes with a bolder character, picked upon the client's specific request.

Bright colours appear as recurring accents scattered throughout the interiors, while black, on the other hand, defines volumes. It does not overwhelm, but rather provides structure, acting as both an architectural statement and the visual backbone of the project.

Natural-finish parquet gives texture throughout the villa, extending across two levels and continuing onto a panoramic terrace accessed via a fully glazed lift. The staircase, twisting around the lift, takes on a striking visual presence thanks to its Forest marble cladding.

At the top of this staircase, the upper floor opens onto a spacious teak-floored terrace overlooking the city and the private garden. An infinity pool and dramatic lighting complete the glamorous experience, reinforcing the dialogue between interior and exterior that the large, picture-frame-style windows render continuous and natural.

05

## Cromie in dialogo

Cuneo - Italy, 2025

Architect: Barbara Vucusa

Photographer: Enrico Dal Zotto

### Products

ECLISSE Syntesis Line - flush sliding pocket door with no added joinery

ECLISSE Syntesis Line Battente - flush-to-wall swing door

ECLISSE Unico - sliding pocket door with jambs

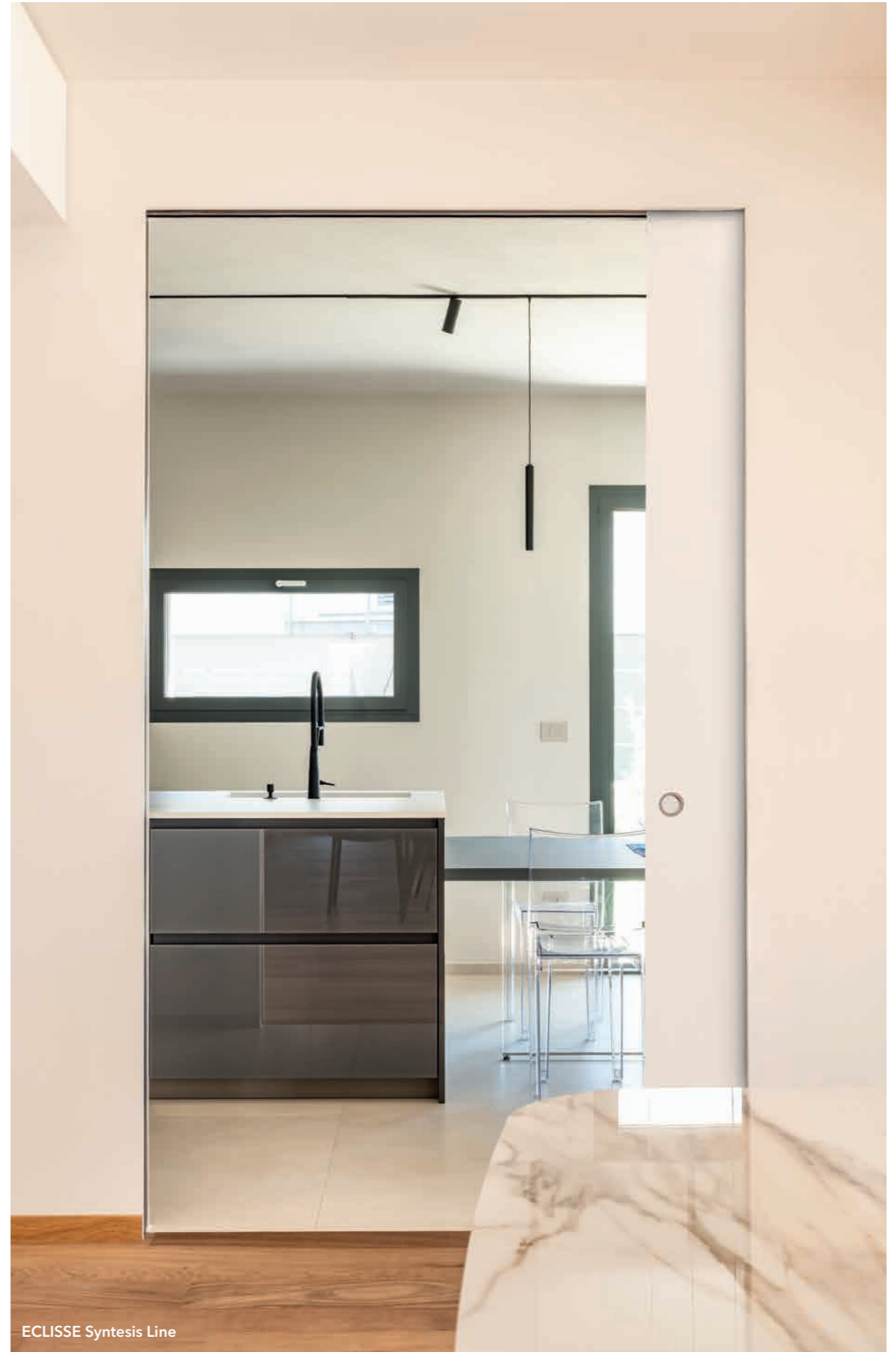


ECLISSE Unico





ECLISSE Syntesis Line Battente



ECLISSE Syntesis Line







This project transforms the outdated spaces of a 1970s house into fluid, light-filled and contemporary interiors that reflect the character of its inhabitants: austere yet welcoming, minimalist yet expressive. Materials take centre stage. Architectural concrete defines the flooring, while steel and sheet metal shape the furnishings, introducing refined textures that add depth and dynamism to a minimalist setting.

The focal point of the living room is the large bespoke bookcase, designed as a genuine architectural feature. Standing over 4.5 metres tall, it was meticulously drawn down to the smallest detail to overcome the technical challenges of assembly and to conceal the vertical joints, hidden by the projecting shelves. Lightweight yet striking, and enhanced by integrated LED lighting, it lends character to the entire space.

All transitions between rooms are managed through sliding pocket doors, allowing those rooms and functional areas to be lived freely as a single, seamless space that can be enclosed only where and when necessary. The large sliding windows leading out to the outdoor terrace are no exception. The interior and exterior flow seamlessly into one another, reinforcing the idea of a home that breathes, welcomes and envelops.

06

## Casa Aria

Monza - Italy, 2025

Architect: Simona Fogalesi

Photographer: Enrico Dal Zotto

### Products

ECLISSE Syntesis Line - flush sliding pocket door with no added joinery

ECLISSE Syntesis Line Double - flush sliding pocket door with no added joinery

ECLISSE Syntesis Line Battente - flush-to-wall swing door

ECLISSE Syntesis Areo - flush-to-wall access panels

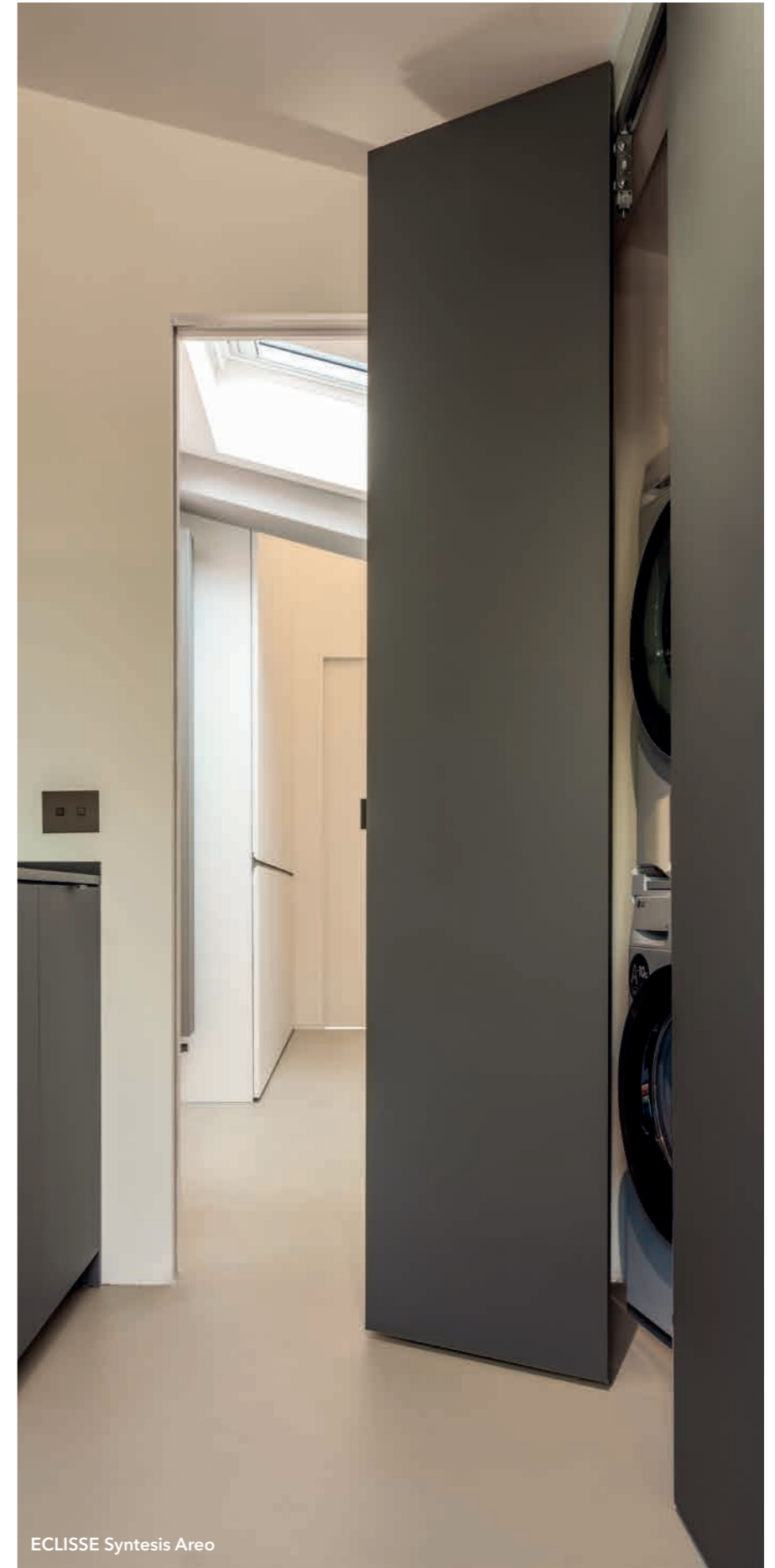




ECLISSE Syntesis Line



ECLISSE Syntesis Line



ECLISSE Syntesis Areo



ECLISSE Syntesis Line





Overlooking the Valtellina landscape in northern Italy, with views across the city of Sondrio and the Valmalenco mountains, Villa G.I. is a renovation project that transformed a classic 1960s detached house into a contemporary residence, successfully combining compositional precision, quality of living and emotional resonance. The whole project originates from a premise that is anything but neutral: rather than simply reconfiguring an existing property, the intervention gives new form to the architect's grandparents' home - a place steeped in family history, memories and presences to be preserved.

The project involved extensive internal demolition and a radical reorganisation of the layout across two levels. The new layout centres on the ground floor, designed as a spacious open-plan space where the entrance hall, living room and kitchen flow seamlessly into one another, winding around two monolithic walls that serve both as partitions and functional pillars. Concrete structural elements were left unfinished as a way of preserving and honouring the past life of the building.

The upper level hosts a more intimate sleeping area, characterised by smaller, cosier spaces, lowered corridor ceilings and vertical windows framing views of the surrounding landscape.

07

## Villa G.I.

Sondrio - Italy, 2025

Architect: Davide Moroni

Photographer: Enrico Dal Zotto

### Products

ECLISSE Synthesis Line Battente - flush-to-wall swing door



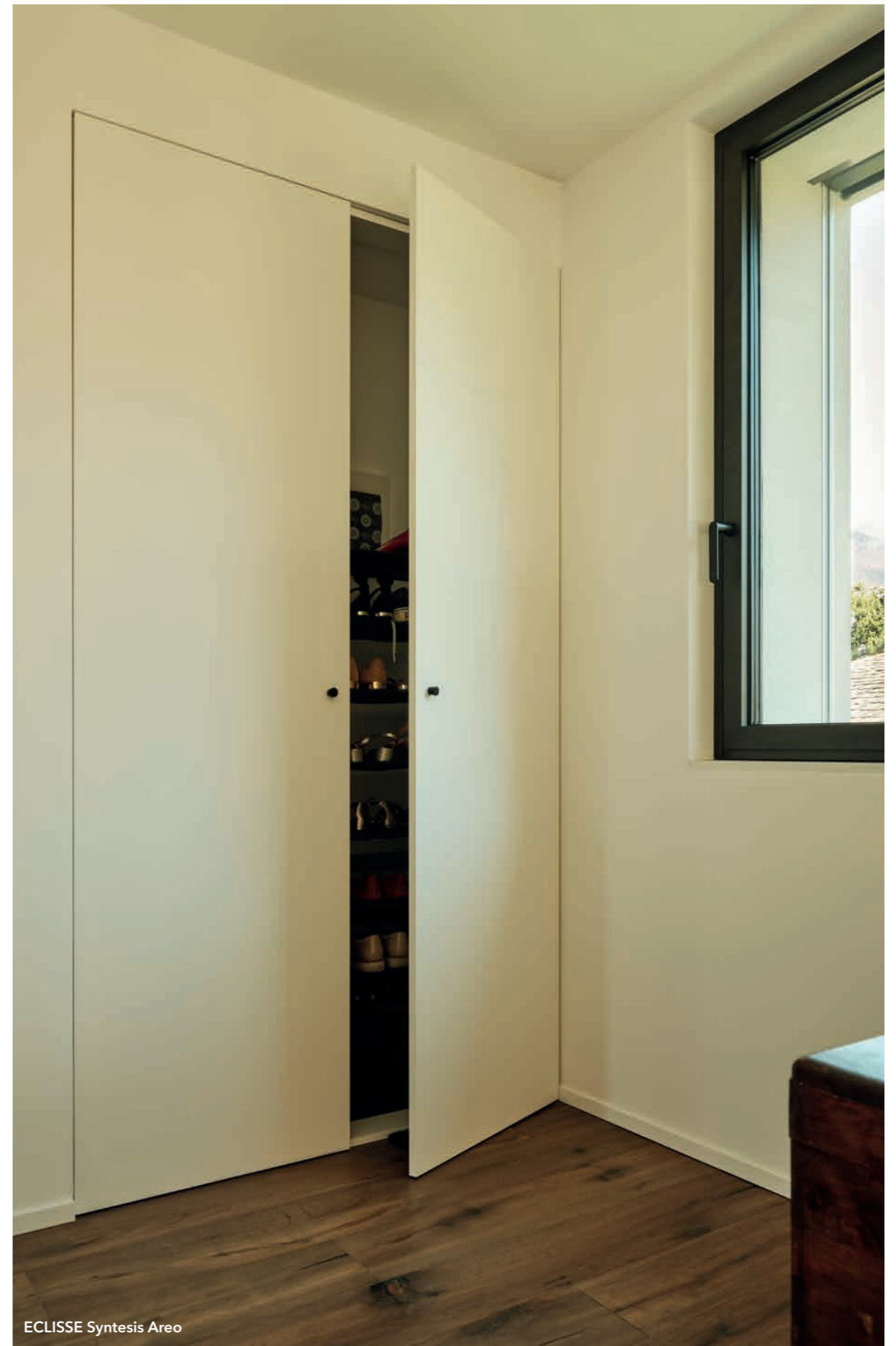






ECLISSE Syntesis Line Battente





ECLISSE Syntesis Areo

## FEATURED PRODUCTS

### ECLISSE UNICO / ECLISSE Classic Collection



#### PRODUCT

Flush sliding pocket door system without jambs and architraves for single wooden and glass doors.

#### VERSIONS

Stud wall / Solid wall

#### ACCESSORIES

Soft closer  
Self-closing system  
Motorisation  
ECLISSE Push&Pull C  
Acoustic KIT for soundproofing

#### PRODUCT VARIANTS

ECLISSE LUCE - wiring-ready  
ECLISSE HOIST - for rail lifting devices

### ECLISSE SYNTESIS LINE / ECLISSE Syntesis Collection



#### PRODUCT

Sliding pocket door system with jambs and architraves for single wooden and glass doors.

#### VERSIONS

Stud wall / Solid wall

#### ACCESSORIES

Soft closer  
ECLISSE Push&Pull S  
ECLISSE Vitro - for glass doors  
Acoustic KIT for soundproofing

#### PRODUCT VARIANTS

ECLISSE SYNTESIS LUCE - wiring-ready

### ECLISSE SYNTESIS LINE BATTENTE / ECLISSE Syntesis Collection



#### PRODUCT

Frame and door set\* for flush single and double hinged door without jambs and architrave. Also suitable for glass doors.

#### VERSIONS

Push door / Pull door  
With header / Without header\*\*  
Universal frame for stud and solid wall

#### ACCESSORIES

Door closer  
Door-closing hinge  
Acoustic KIT for soundproofing

#### PRODUCT VARIANTS

Single door frame with sloping header  
Single door frame with provision for electric striker

\* Door panels are optional  
\*\* Double door frame only available with header

### ECLISSE SYNTESIS AREO / ECLISSE Syntesis Collection



#### PRODUCT

Flush wall closures for built-in closets, credenzas, storage closets, wall niches and equipped under-stair closets.

#### VERSIONS

Universal frame for stud and solid wall

#### ACCESSORIES

Cover  
Hardware for shelf supports

#### PRODUCT VARIANTS

Single and double door (also for outdoor)  
Angled door  
Top-hung and bottom-hinged flap door  
Bi-fold single and double door  
Modular (up to 8 side-by-side doors)

## CREDITS

### OUR SINCERE THANKS TO

**Spazi Belli**  
[spazibelli.com](http://spazibelli.com)

for giving us the opportunity to discover these wonderful projects.

**Ph. Enrico Dal Zotto**  
[enricodalzotto.it](http://enricodalzotto.it)  
for all images.

All architects and designers for their creativity.

All the owners of the various locations for their cooperation.

## GET FEATURED ON VISIONS!

Would you like to see your latest project in the next VISIONS?  
Get in touch with us and tell us more about it.

We would love to receive a few details about yourself, a description of the project, floor plans and drawings.  
Which ECLISSE products did you choose and why?

Contact email:  
[marketing@eclisse.it](mailto:marketing@eclisse.it)

©2026 ECLISSE - All rights reserved.  
The use, filing and total or partial reproduction, using any mechanical or electronic means, of texts, drawings and pictures contained in this publication is strictly prohibited, unless specifically approved in writing by ECLISSE.  
ECLISSE refuses any responsibility for misprints, clerical errors or for any other reason.

04/2026 - 601036564

## ECLISSE WORLD

### OUR SUBSIDIARIES

ECLISSE (Italia - HQ)

ECLISSE Brasil

ECLISSE Česká Republika

ECLISSE Deutschland

ECLISSE España

ECLISSE France

ECLISSE Österreich

ECLISSE Polska

ECLISSE România

ECLISSE Slovenská Republika

ECLISSE United Kingdom

### OUR OFFICIAL DISTRIBUTORS ARE IN

Belgium  
Bielorussia  
Chile  
Denmark  
Estonia  
Finland  
Hungary  
India  
Latvia  
Lithuania  
Luxembourg  
Morocco  
Netherlands  
Tunisia  
Serbia  
Sweden  
Switzerland  
Turkey  
USA



Find your nearest distributor  
[www.eclisse.com](http://www.eclisse.com)



**ECLISSE s.r.l.** • Via Giovanni Pascoli, 7 - 31053 Pieve di Soligo TV - ITALY  
Tel. +39 0438 985749 • [international.sales@eclisse.it](mailto:international.sales@eclisse.it) • [www.eclisse.com](http://www.eclisse.com)