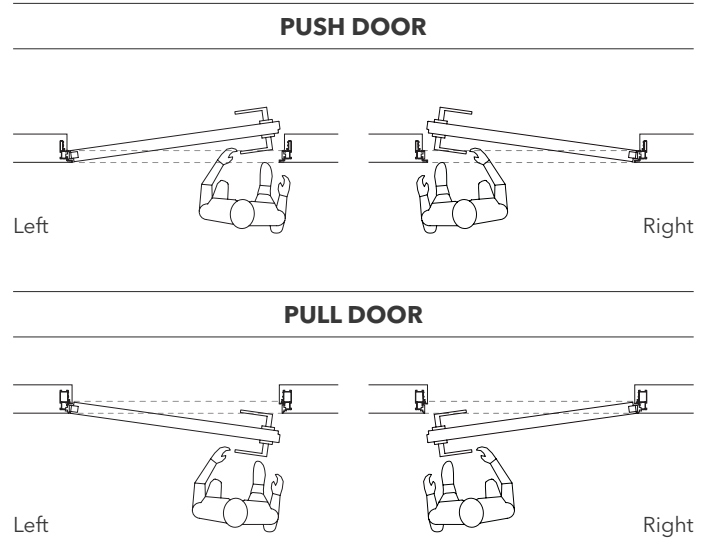
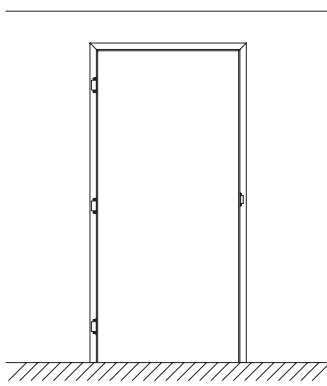


# ECLISSE SYNTESIS® LINE BATTENTE

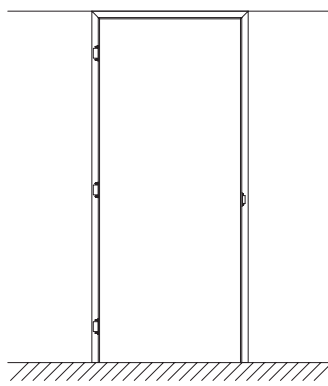
OPENINGS - SET - HARDWARE



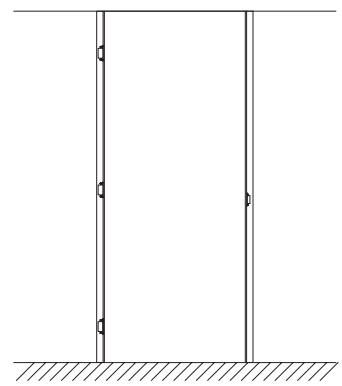
The distinctive feature of ECLISSE SYNTESIS® LINE BATTENTE is the possibility to install the doors flush with the ceiling, thanks to the option with no header, in order to achieve a total integration between door, wall and ceiling.



With header



With header  
flush to ceiling



Without header  
(the door is flush to ceiling)

## SUPPLY METHODS



### COMPLETE KIT

The complete KIT includes:  
FRAME STRUCTURE + PRIMER-COATED DOOR  
+ HARDWARE

### SINGLE ELEMENTS

FRAME STRUCTURE  
PRIMER-COATED DOOR  
HARDWARE

# ECLISSE SYNTESIS® LINE BATTENTE

## APPLICATIONS

Dimensions are given in mm

The frame fits both stud and solid wall.

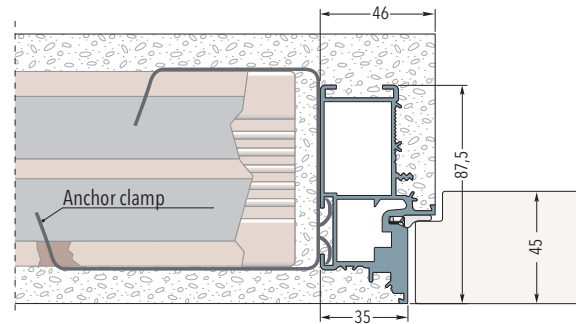
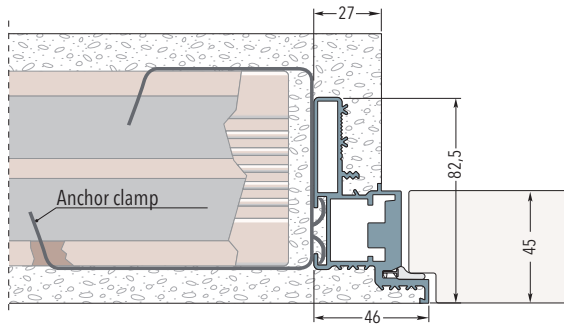
For solid wall 6 clamps are cemented in the special spaces created in the wall.

For stud wall the frame is fixed with screws to the wood or metal structure through the existing holes.

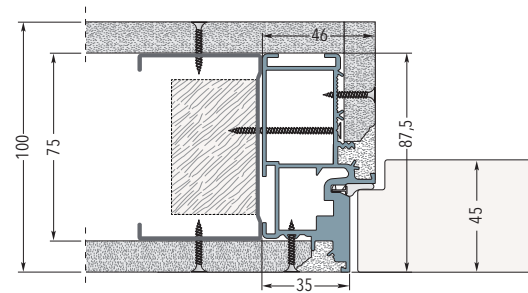
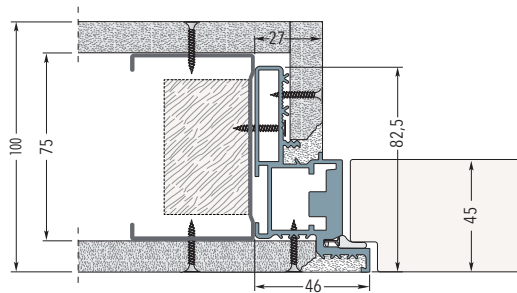
### PUSH DOOR

### PULL DOOR

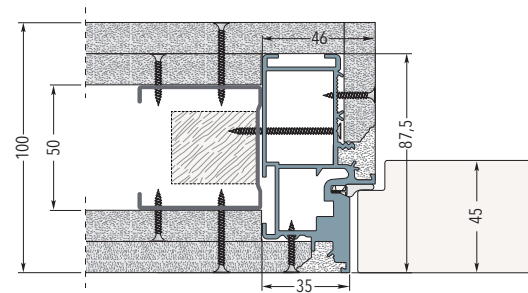
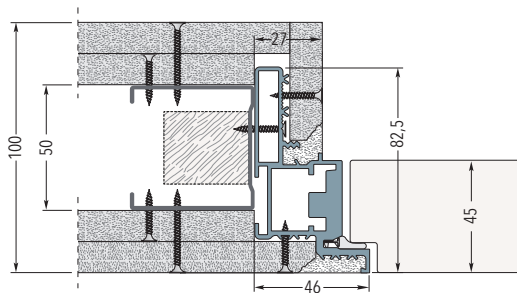
#### Frame on solid wall



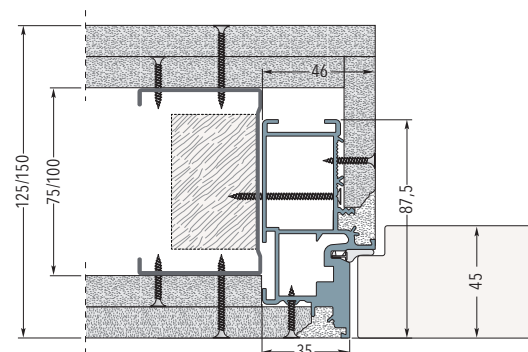
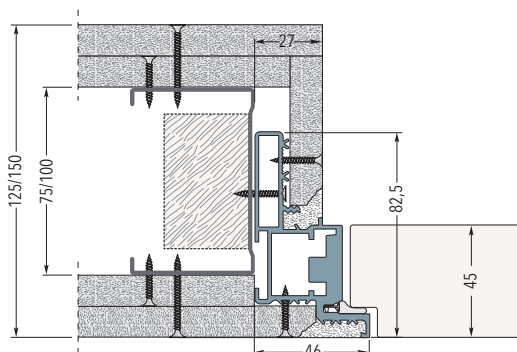
#### Frame on stud wall with one plasterboard layer - Finished wall thickness 100 mm



#### Frame on stud wall with two plasterboard layers - Finished wall thickness 100 mm



#### Frame on stud wall with two plasterboard layers - Finished wall thickness 125/150 mm

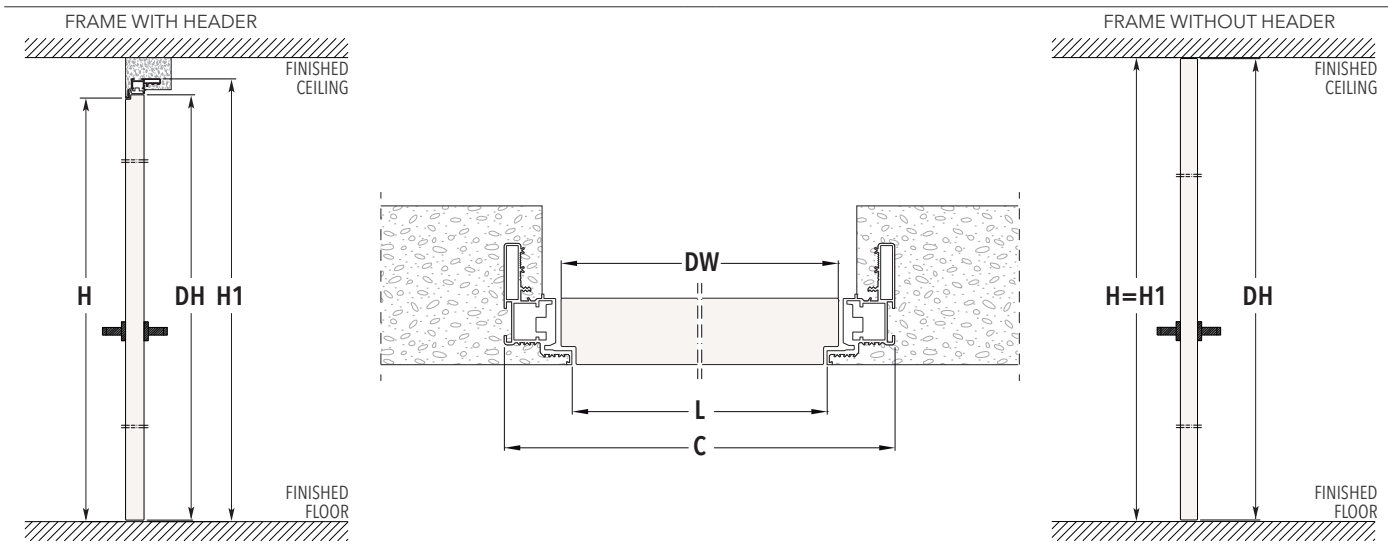


# ECLISSE SYNTESIS® LINE BATTENTE

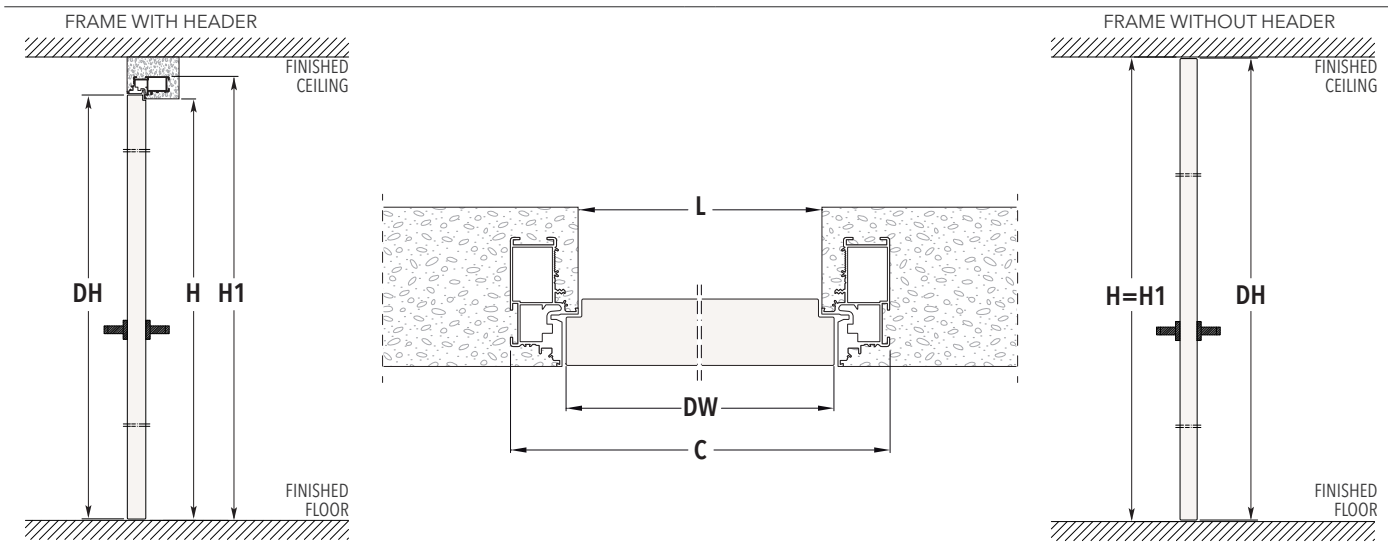
## SIZES - FRAME WITH OR WITHOUT HEADER



### PUSH DOOR



### PULL DOOR



#### SIZES - FRAME WITH HEADER

PASSAGE SIZE <b>L x H</b>	OVERALL DIMENSIONS <b>C x H1</b>	DOOR PANEL*	
		<b>DW</b>	<b>DH</b>
600 x 2100/2400	692 x 2146/2446	616	2104/2404
650 x 2100/2400	742 x 2146/2446	666	2104/2404
700 x 2100/2400	792 x 2146/2446	716	2104/2404
750 x 2100/2400	842 x 2146/2446	766	2104/2404
800 x 2100/2400	892 x 2146/2446	816	2104/2404
850 x 2100/2400	942 x 2146/2446	866	2104/2404
900 x 2100/2400	992 x 2146/2446	916	2104/2404
950 x 2100/2400	1042 x 2146/2446	966	2104/2404
1000 x 2100/2400	1092 x 2146/2446	1016	2104/2404

#### SIZES - FRAME WITHOUT HEADER

PASSAGE SIZE <b>L x H</b>	OVERALL DIMENSIONS <b>C x H1</b>	DOOR PANEL*	
		<b>DW</b>	<b>DH</b>
600 x 2700	692 x 2700	616	2693
650 x 2700	742 x 2700	666	2693
700 x 2700	792 x 2700	716	2693
750 x 2700	842 x 2700	766	2693
800 x 2700	892 x 2700	816	2693
850 x 2700	942 x 2700	866	2693
900 x 2700	992 x 2700	916	2693
950 x 2700	1042 x 2700	966	2693
1000 x 2700	1092 x 2700	1016	2693

Dimensions are given in mm

#### NOTES

- ▶ **Frame with header:** H1 is always 46 mm higher than H.
- ▶ Supplied as standard with 3 hinges. Max. door panel weight with 3 hinges: 50 kg.
- ▶ Available upon request with 4 hinges. Max. door panel weight with 4 hinges: 65 kg.
- ▶ Install at finished floor level.
- \* Door panel thickness: 45 mm.

#### ACCESSORIES

- ▶ Door closer
- ▶ Self-closing door hinge