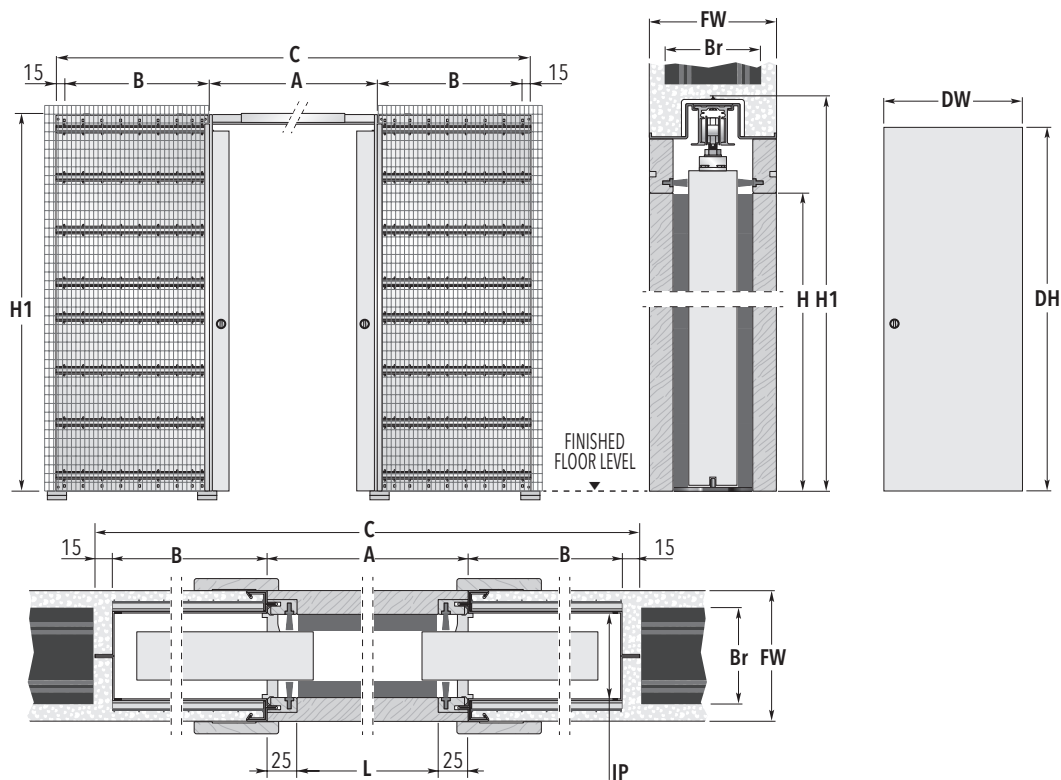


ECLISSE DOUBLE

SOLID WALL



SYSTEMS FOR DOUBLE DOOR - Measures related to Italian standards, other dimensions available

PASSAGE SIZE L x H	OVERALL DIMENSIONS			DOOR PANEL*	
	C x H1	A	B	DW	DH
1200 x 2000/2100	2530 x 2090/2190	1250	625	615 ÷ 635	2010/2110
1300 x 2000/2100	2830 x 2090/2190	1350	725	665 ÷ 735	2010/2110
1400 x 2000/2100	2930 x 2090/2190	1450	725	715 ÷ 735	2010/2110
1500 x 2000/2100	3230 x 2090/2190	1550	825	765 ÷ 835	2010/2110
1600 x 2000/2100	3330 x 2090/2190	1650	825	815 ÷ 835	2010/2110
1700 x 2000/2100	3630 x 2090/2190	1750	925	865 ÷ 935	2010/2110
1800 x 2000/2100	3730 x 2090/2190	1850	925	915 ÷ 935	2010/2110
1900 x 2000/2100	4030 x 2090/2190	1950	1025	965 ÷ 1035	2010/2110
2000 x 2000/2100	4130 x 2090/2190	2050	1025	1015 ÷ 1035	2010/2110

FINISHED WALL = FW		BRICKS = Br		INTERNAL PASSAGE = IP
90	→	60		54
108	→	80		72
125	→	100		89
150	→	120		114

Dimensions are given in mm

NON-STANDARD SIZES

- ▶ Passage width 600+600÷1200+1200 mm.
- ▶ Passage height 500÷2600 mm.
- ▶ Possibility of measures up to 1500+1500 mm (width) and 2900 mm (height) with sizes and internal passages different from the chart.
- ▶ Frames with overall dimensions, passage sizes and internal dims different from the ones indicated on the table, can be realized on request.

NOTES

- ▶ When using pocket with internal dims of 54 mm max. door thickness 40 mm (including any glass holder for glazed door).
- ▶ Max. door weight 100 kg (150 kg on request).
- ▶ ECLISSE counterframes can host any sliding door panel of standard dimensions available on the market.
- ▶ Install at finished floor level.
- * Listed measures refers to wooden door panels only.

ACCESSORIES

- ▶ Double door co-ordination for CLASSIC
- ▶ ECLISSE BIAS®
- ▶ ECLISSE BIAS® DS
- ▶ ECLISSE PUSH&PULL C
- ▶ Motorisation
- ▶ Anti-warp profile