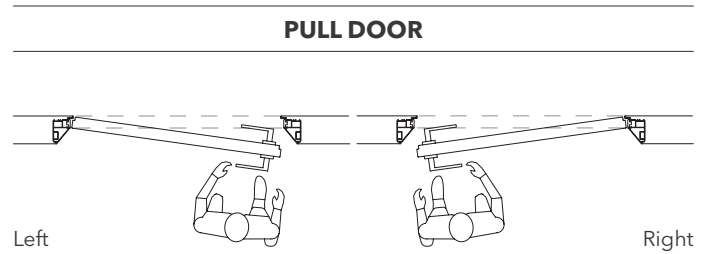
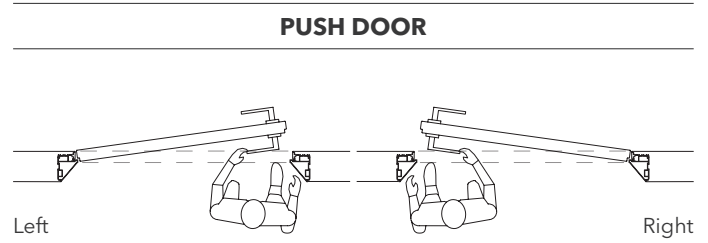
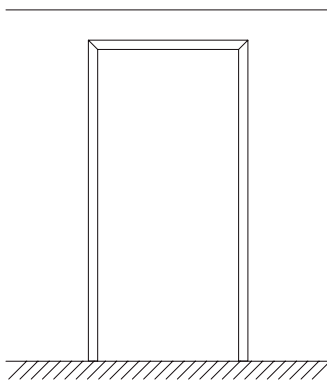


# ECLISSE 40 SINGLE

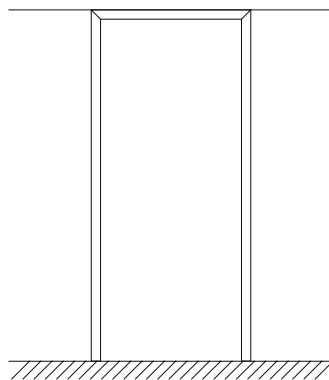
## OPENINGS



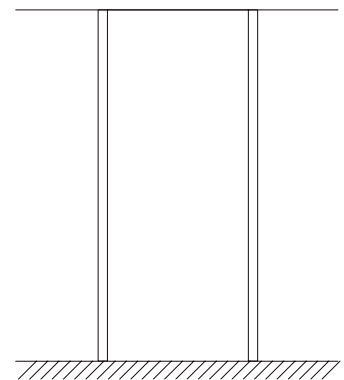
The distinctive feature of ECLISSE 40 is the possibility to install the doors flush with the ceiling, thanks to the option with no header, in order to achieve a total integration among door, wall and ceiling.



With header



With header  
flush to ceiling



Without header  
(the door is flush to ceiling)

# ECLISSE 40 SINGLE

## APPLICATIONS

Dimensions are given in mm

The frame fits both stud and solid wall.

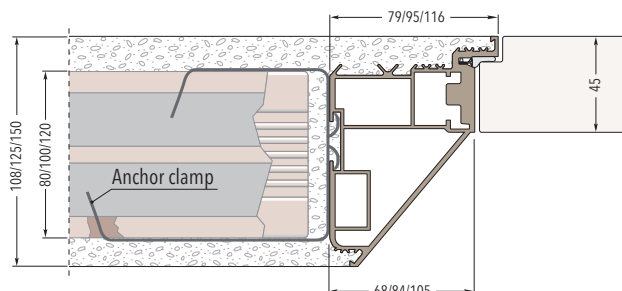
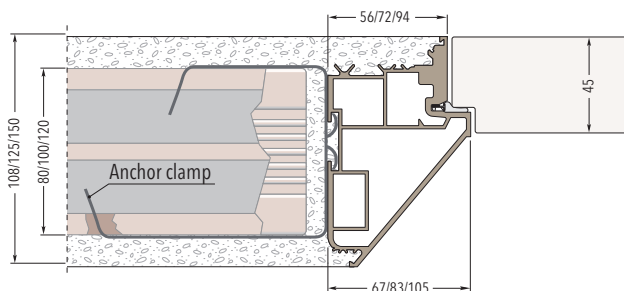
For solid wall 6 clamps are cemented in the special spaces created in the wall.

For stud wall the frame is fixed with screws to the wood or metal structure through the existing holes.

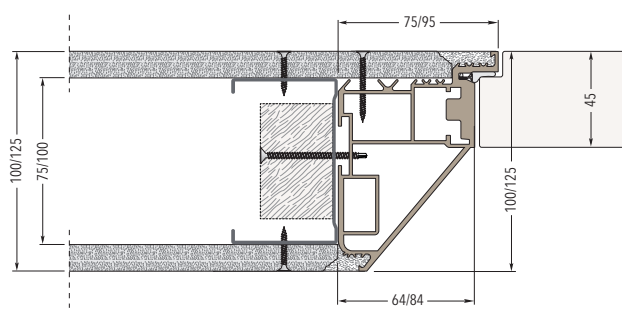
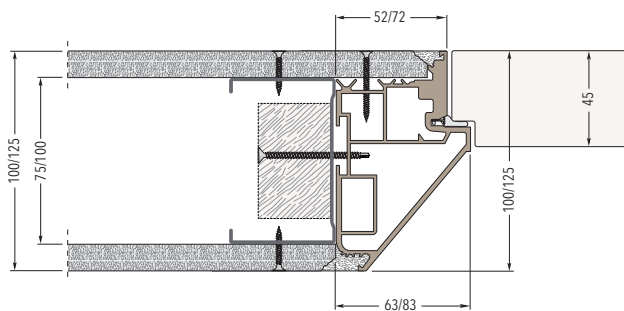
### PUSH DOOR

### PULL DOOR

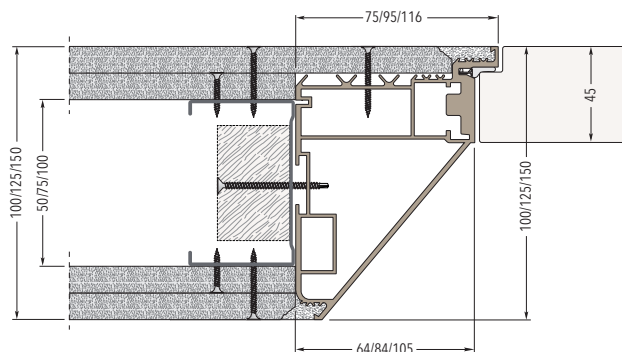
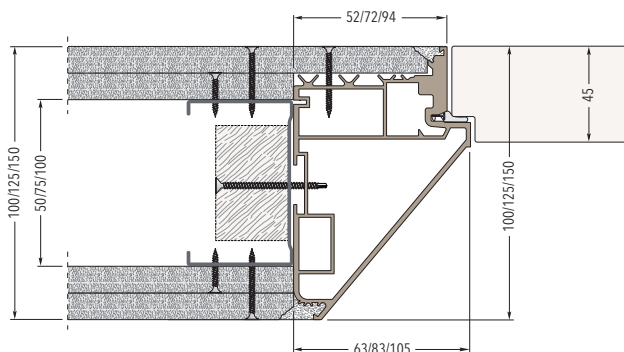
#### Frame on solid wall - Finished wall thickness 108/125/150 mm



#### Frame on stud wall with one plasterboard layer - Finished wall thickness 100/125 mm

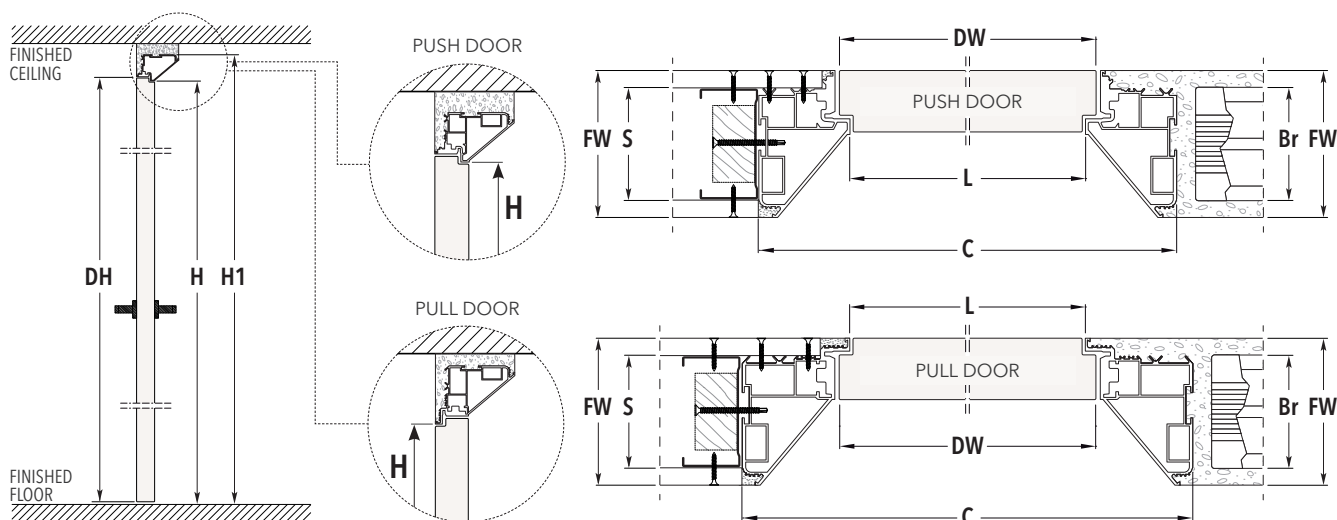


#### Frame on stud wall with two plasterboard layers - Finished wall thickness 100/125/150 mm



# ECLISSE 40 SINGLE

SIZES - FRAME WITH HEADER - **PUSH DOOR** - **PULL DOOR**



PASSAGE SIZE <b>L x H</b>	FINISHED WALL 100		FINISHED WALL 108		DOOR PANEL Thk. 45 mm	
	OVERALL DIMENSIONS <b>C x H1</b>		OVERALL DIMENSIONS <b>C x H1</b>		<b>DW</b>	<b>DH</b>
	<b>PUSH DOOR</b>	<b>PULL DOOR</b>	<b>PUSH DOOR</b>	<b>PULL DOOR</b>		
600 x 2100/2400	726 x 2163/2463	750 x 2175/2475	734 x 2167/2467	758 x 2179/2479	616	2104/2404
700 x 2100/2400	826 x 2163/2463	850 x 2175/2475	834 x 2167/2467	858 x 2179/2479	716	2104/2404
800 x 2100/2400	926 x 2163/2463	950 x 2175/2475	934 x 2167/2467	958 x 2179/2479	816	2104/2404
900 x 2100/2400	1026 x 2163/2463	1050 x 2175/2475	1034 x 2167/2467	1058 x 2179/2479	916	2104/2404
1000 x 2100/2400	1126 x 2163/2463	1150 x 2175/2475	1134 x 2167/2467	1158 x 2179/2479	1016	2104/2404

PASSAGE SIZE <b>L x H</b>	FINISHED WALL 125		FINISHED WALL 150		DOOR PANEL Thk. 45 mm	
	OVERALL DIMENSIONS <b>C x H1</b>		OVERALL DIMENSIONS <b>C x H1</b>		<b>DW</b>	<b>DH</b>
	<b>PUSH DOOR</b>	<b>PULL DOOR</b>	<b>PUSH DOOR</b>	<b>PULL DOOR</b>		
600 x 2100/2400	766 x 2183/2483	790 x 2195/2495	810 x 2205/2505	832 x 2216/2516	616	2104/2404
700 x 2100/2400	866 x 2183/2483	890 x 2195/2495	910 x 2205/2505	932 x 2216/2516	716	2104/2404
800 x 2100/2400	966 x 2183/2483	990 x 2195/2495	1010 x 2205/2505	1032 x 2216/2516	816	2104/2404
900 x 2100/2400	1066 x 2183/2483	1090 x 2195/2495	1110 x 2205/2505	1132 x 2216/2516	916	2104/2404
1000 x 2100/2400	1166 x 2183/2483	1190 x 2195/2495	1210 x 2205/2505	1232 x 2216/2516	1016	2104/2404

FINISHED WALL = <b>FW</b>	SOLID WALL	STUD WALL	
	BRICKS = <b>Br</b>	STUDWORK = <b>S</b>	
<b>100</b> →	--	50 with two plasterboard layers	75 with one plasterboard layer
<b>108</b> →	80	--	--
<b>125</b> →	100	75 with two plasterboard layers	100 with one plasterboard layer
<b>150</b> →	120	100 with two plasterboard layers	

Dimensions are given in mm

## NOTES

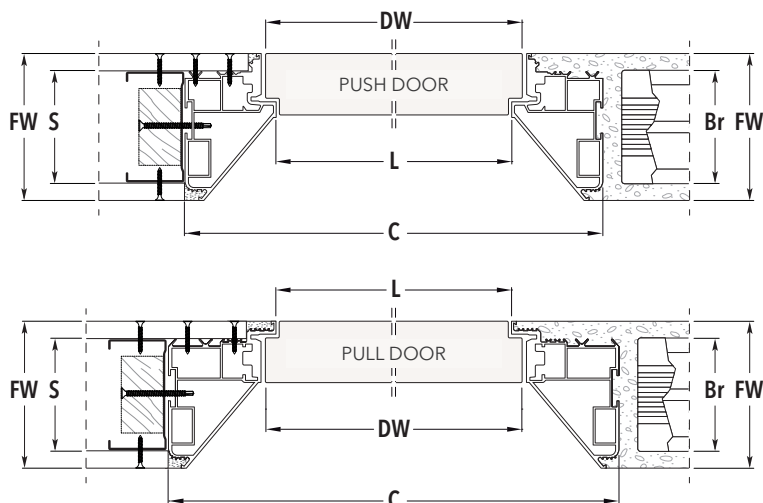
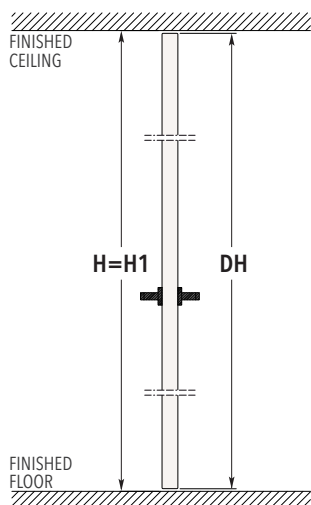
- ▶ Supplied as standard with 3 hinges. Max. door panel weight with 3 hinges: 50 kg.
- ▶ Available upon request with 4 hinges. Max. door panel weight with 4 hinges: 65 kg.
- ▶ Available finishes: Primer-coated, Champagne, Bronze, Tobacco and White RAL 9010.
- ▶ Install at finished floor level.

## ACCESSORIES

- ▶ Self-closing door hinge

# ECLISSE 40 SINGLE

SIZES - FRAME WITHOUT HEADER - **PUSH DOOR** - **PULL DOOR**



PASSAGE SIZE <b>L x H</b>	FINISHED WALL 100		FINISHED WALL 108		DOOR PANEL Thk. 45 mm	
	OVERALL DIMENSIONS <b>C x H1</b>		OVERALL DIMENSIONS <b>C x H1</b>		<b>DW</b>	<b>DH</b>
	<b>PUSH DOOR</b>	<b>PULL DOOR</b>	<b>PUSH DOOR</b>	<b>PULL DOOR</b>		
600 x 2700	726 x 2700	750 x 2700	734 x 2700	758 x 2700	616	2693
700 x 2700	826 x 2700	850 x 2700	834 x 2700	858 x 2700	716	2693
800 x 2700	926 x 2700	950 x 2700	934 x 2700	958 x 2700	816	2693
900 x 2700	1026 x 2700	1050 x 2700	1034 x 2700	1058 x 2700	916	2693
1000 x 2700	1126 x 2700	1150 x 2700	1134 x 2700	1158 x 2700	1016	2693

PASSAGE SIZE <b>L x H</b>	FINISHED WALL 125		FINISHED WALL 150		DOOR PANEL Thk. 45 mm	
	OVERALL DIMENSIONS <b>C x H1</b>		OVERALL DIMENSIONS <b>C x H1</b>		<b>DW</b>	<b>DH</b>
	<b>PUSH DOOR</b>	<b>PULL DOOR</b>	<b>PUSH DOOR</b>	<b>PULL DOOR</b>		
600 x 2700	766 x 2700	790 x 2700	810 x 2700	832 x 2700	616	2693
700 x 2700	866 x 2700	890 x 2700	910 x 2700	932 x 2700	716	2693
800 x 2700	966 x 2700	990 x 2700	1010 x 2700	1032 x 2700	816	2693
900 x 2700	1066 x 2700	1090 x 2700	1110 x 2700	1132 x 2700	916	2693
1000 x 2700	1166 x 2700	1190 x 2700	1210 x 2700	1232 x 2700	1016	2693

FINISHED WALL = <b>FW</b>	SOLID WALL	STUD WALL	
	BRICKS = <b>Br</b>	STUDWORK = <b>S</b>	
<b>100</b> →	--	50 with two plasterboard layers	75 with one plasterboard layer
<b>108</b> →	80	--	--
<b>125</b> →	100	75 with two plasterboard layers	100 with one plasterboard layer
<b>150</b> →	120	100 with two plasterboard layers	

Dimensions are given in mm

## NOTES

- ▶ Supplied as standard with 3 hinges. Max. door panel weight with 3 hinges: 50 kg.
- ▶ Available upon request with 4 hinges. Max. door panel weight with 4 hinges: 65 kg.
- ▶ Available finishes: Primer-coated, Champagne, Bronze, Tobacco and White RAL 9010.
- ▶ Install at finished floor level.

## ACCESSORIES

- ▶ Self-closing door hinge