

**FLUSH
SOLUTIONS**



 **ECLISSE**
LOOKING FURTHER

WITH ECLISSE EVERYTHING IS SIMPLER

Simple to choose from
a rich product portfolio.

Simple to design
with advice from our
dealers and a detailed
technical library.

Simple to install with
patented innovations.

Simple to customise
with endless solutions.

Are you looking for other flush-to-wall solutions
besides hinged and sliding doors?

Choose from a variety of ECLISSE solutions:
innovative and cutting-edge, technically consistent and
aesthetically uniform, but always combinable and customisable.



You can choose
from **primer-coated
raw door panels**
ready to be painted,
lacquered doors in
RAL colours, **glass**
and **aluminium doors**
and **soundproofed
solutions**.

**Access panels and
hatches** are in **white
melamine**, but you can
also paint them like
the wall.

.01 ECLISSE Syntesis Tech

Flush-mounted hatches
to conceal service
compartments and
electrical switchboards.

.02 ECLISSE 40

Flush door frame
splayed at 40° on
one side, flush with
the wall and invisible
on the other.
It highlights the door
with a 3D effect.

.03 ECLISSE Delta

Inclined skirting board
that give the illusion of
a flush-to-wall effect,
with straight or faceted
end elements, ideal for
matching flush doors.

.04 ECLISSE Syntesis Line Battente

Door frame for flush to
the wall hinged doors
with no protruding trim.
Available with flush-to-
ceiling door, inclined
upper edge, acoustic
performance kit and in
double-leaf version too.

.05 ECLISSE Syntesis Areo

Flush-to-wall access
panels in various sizes
and opening options
to best meet all design
requirements.

.06 ECLISSE Syntesis Baseboard

Aluminium profile for
the easy installation
of flush-to-wall
baseboards.
It can be backlit with
LEDs strips.

.07 ECLISSE Syntesis Line

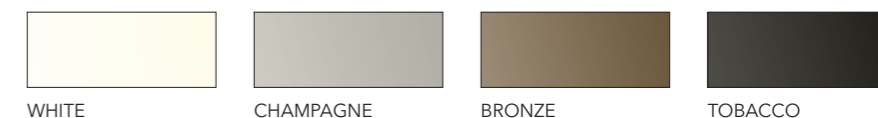
Counterframe for flush
sliding pocket doors
with no protruding
trim. Also available
with wiring provisions,
acoustic performance
kit and in double-leaf
version.



Be inspired by the perfect combination

HAVE FUN CHOOSING FINISHES FOR DIFFERENT MATERIALS

Create surprising combinations by matching frames, profiles, glass doors, handles and skirting boards in different colours. Coordinate every single element for the best design ever!



ALUMINIUM FINISH FOR THE METAL FRAME IS AVAILABLE FOR GLASS AND ALUMINIUM DOORS



WHITE FRAME AND BRONZE GLASS



The extra touch



ECLISSE Delta, the inclined skirting board that is applied directly onto the finished wall. It creates a flush-to-wall effect thanks to its minimalist design.



ECLISSE Mimesi, the super slim décor profile designed to highlight the perimeter of the passageway of a flush sliding pocket door.



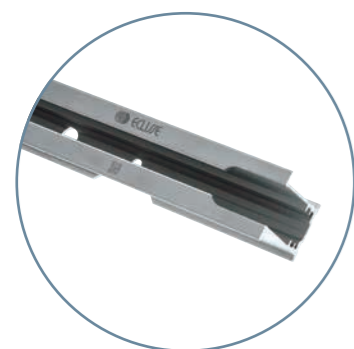
TOBACCO FRAMES, BRONZE GLASS (pocket doors on the left), REFLEX BRONZE GLASS (pocket doors on the right)

The pursuit of perfection

DETAILS THAT MAKE THE DIFFERENCE

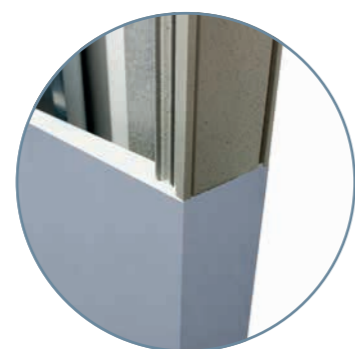
The quality of ECLISSE products can be perceived during installation as well as in everyday use, but it is the finer details that truly make a difference.

The perfection of the mechanisms and the technical details behind the ease of installation and perfect aesthetics can only be appreciated by looking at the product up close.



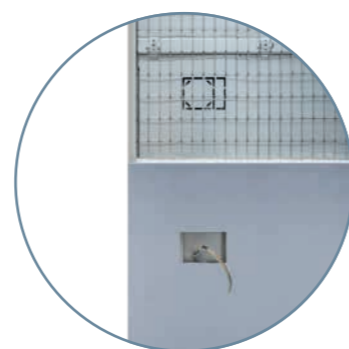
Safety

No worries thanks to the **fully extractable track**, which can be pulled out at any time without masonry work to be replaced or to install accessories.



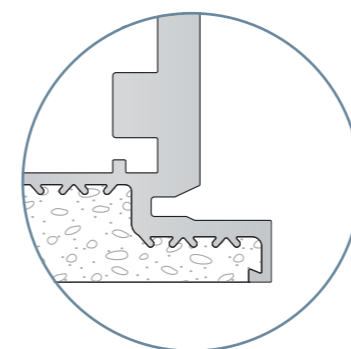
Aesthetics

Resin-coated profiles allow the wall finish to be applied to the metal structure too, thus achieving a smooth, perfect aesthetic result.



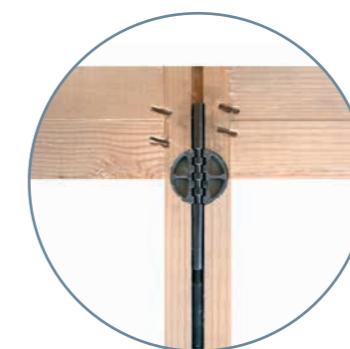
Innovation

The **Luce system** allows electrical wiring to be run inside the counterframe. Switches and sockets are always within easy reach!



Reliability

The **robustness** of the frame and the special shape of the profile make the structure very solid, **preventing cracks from forming around the perimeter**.



Functionality

The **standard tensioning rod**, which can be adjusted at any time, keeps the door in tension and ensures perfect flatness with the wall.



Minimalism

A single room **completely flush from ceiling to floor**, both in the openings and in the accessories.



Via Giovanni Pascoli, 7 - 31053 Pieve di Soligo TV - Tel. 0438 980 513 - eclisse@eclisse.it - www.eclisse.it

Configura il tuo prodotto ECLISSE su www.cercafacileeclisse.it
Hai domande? Chiamaci dal lunedì al venerdì 08:00 - 12:00 / 14:00 - 18:00.