



Sliding Pocket Door Systems

APPLY MORTAR TO THE FRAME AS FOLLOWS:

The metal framework, when covered with mortar, becomes an integral part of the wall so please ensure these instructions are followed carefully for maximum rigidity

USE THE MIXTURE AS FOLLOWS:

- **Cement mortar for walls**
(up to 3mm grain)
EN 998-2 CLASSE M5
- **Add 15% Portland cement**
EN 197-1 CEM II/B - L 32,5 N
- **Tap Water according to the mortar instructions**



FIRST STEP, MORTAR COAT TO THE MESH

- Using the back of the trowel and a flicking action apply the mortar until it just covers the mesh and roughly smooth to that level
- **Important: leave to dry for at least 15 days**

SECOND STEP, FINAL MORTAR COAT

- Using the same mix as in the first phase apply the mortar and level to the desired finished wall thickness and leave to dry completely
- This will take a few days

THIRD STEP – FINISH PLASTERING

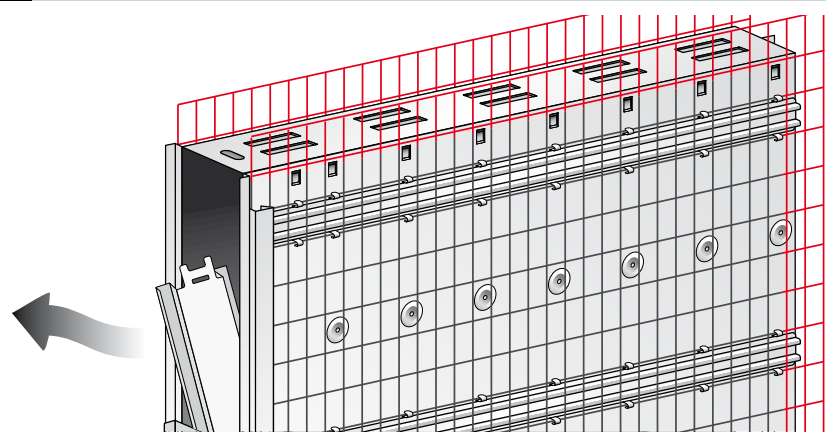
- Make sure that the surface is dry and apply a coat of plaster with the proper mix

Warning: avoid high thermal shock during use.
Recommended temperature range is between +5°C and +30°C.
Do not apply mortar to frozen framework.

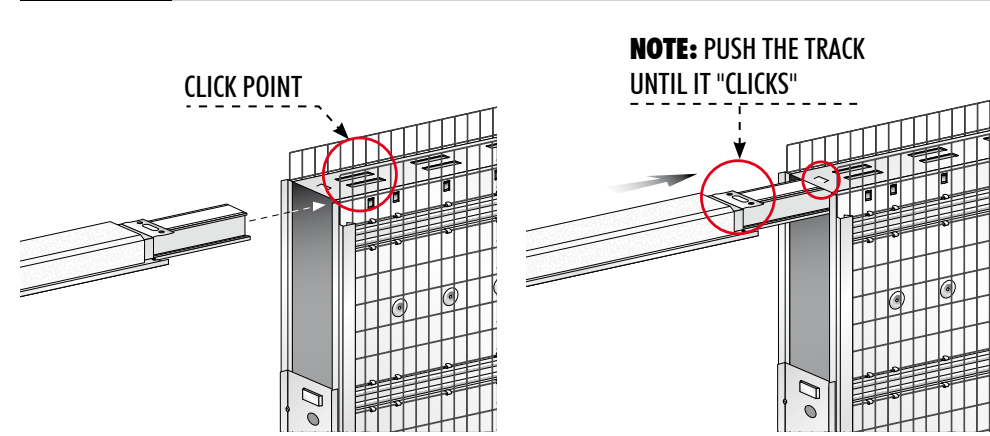
WARNING! - FOR FRAME ASSEMBLY INSTRUCTIONS (See back) ► ► ►

ASSEMBLY AND INSTALLATION UNICO SD Sliding Door System for solid walls

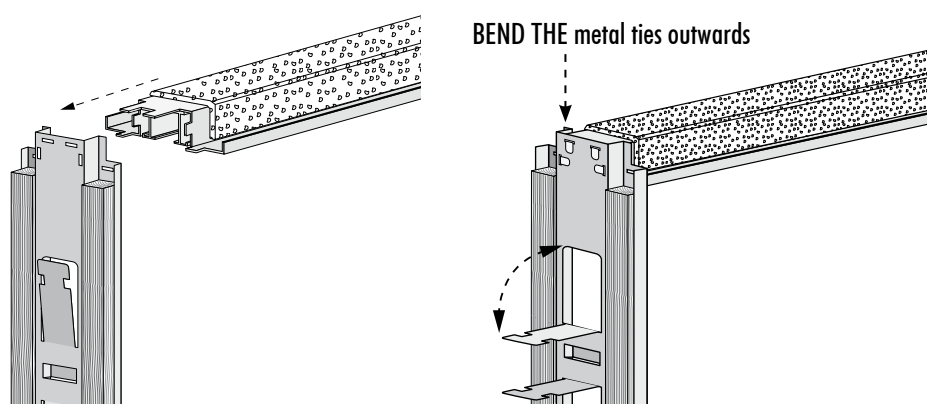
1 REMOVE THE KIT CONTENTS FROM INSIDE THE FRAME. DO NOT REMOVE THE COVER PLATE WHEN FITTED



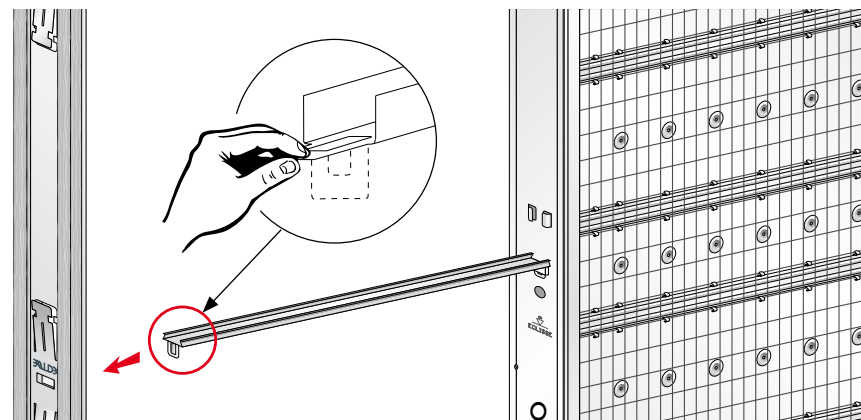
2 Insert the top beam with track into the bayonet system in the top of the frame ensuring it "clicks" into position. DO NOT REMOVE THE POLYSTYRENE BAR



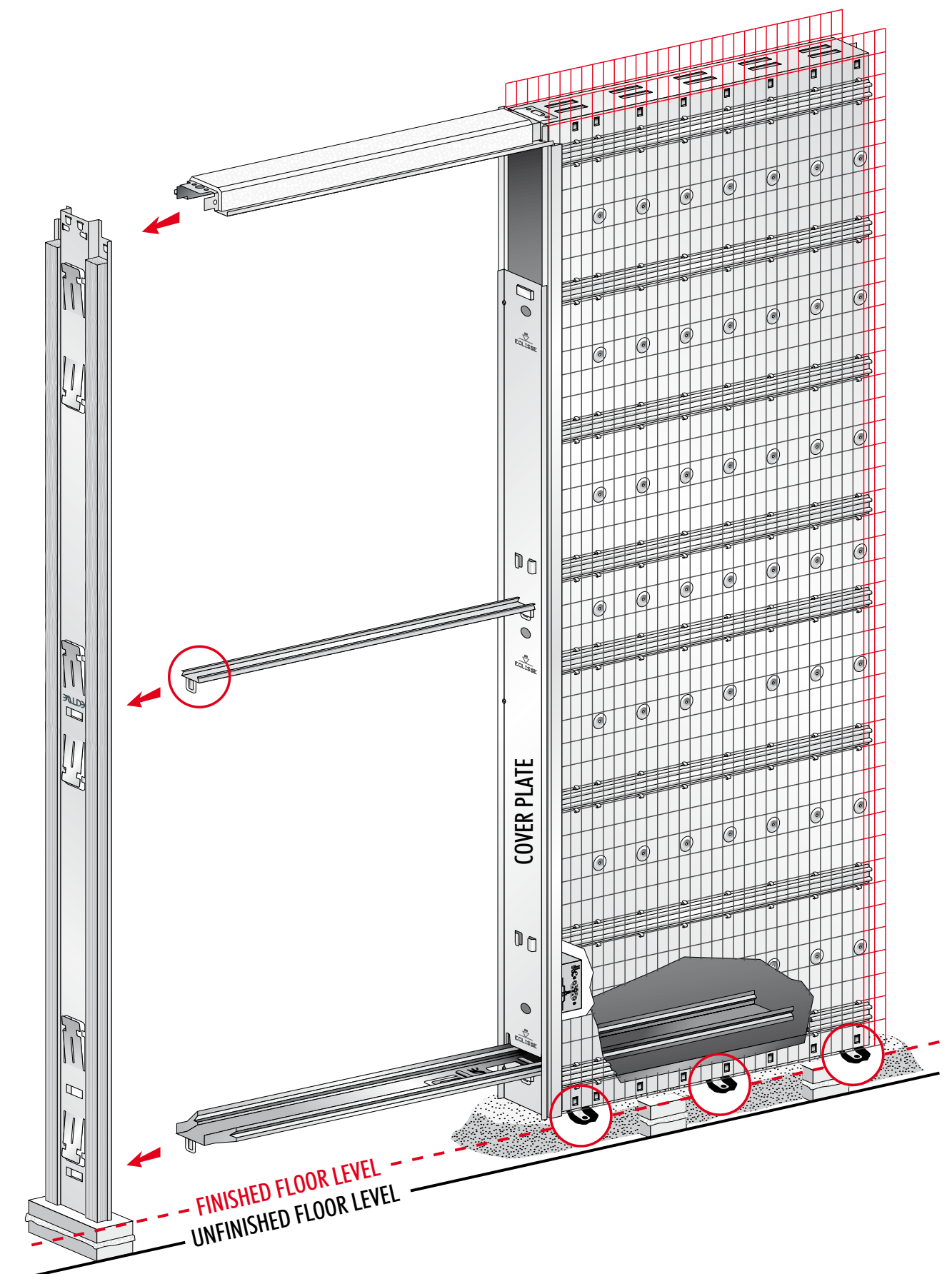
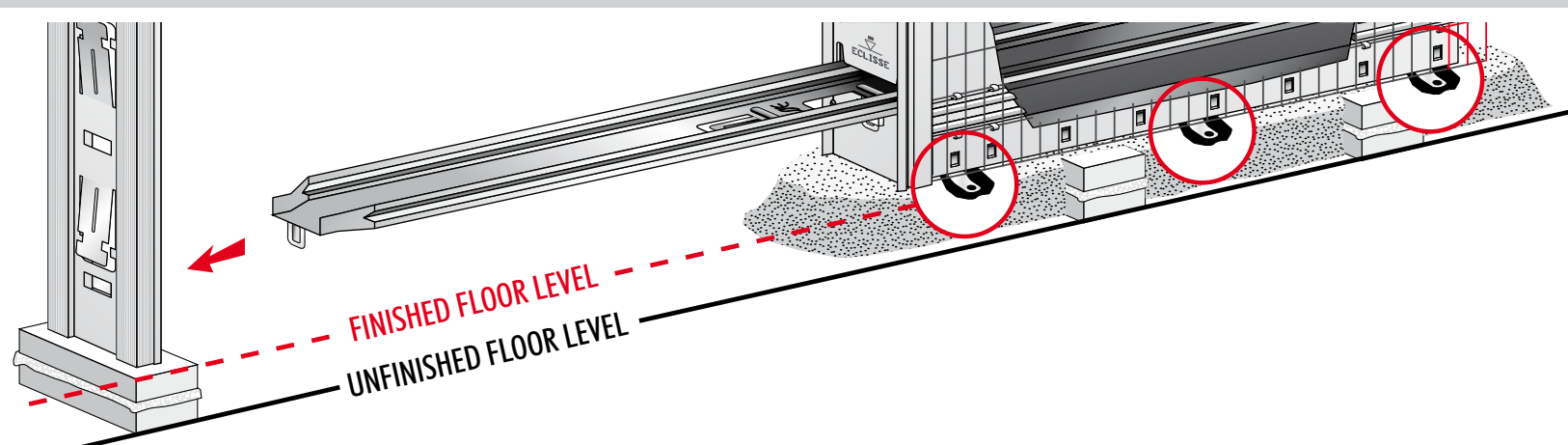
3 Insert the metal tongues at the end of the top beam into the slots at the top of the metal door post. Bend the metal tongues over using a hammer.



4 Bend the ends of the bracers backwards through 90° and locate as shown/S

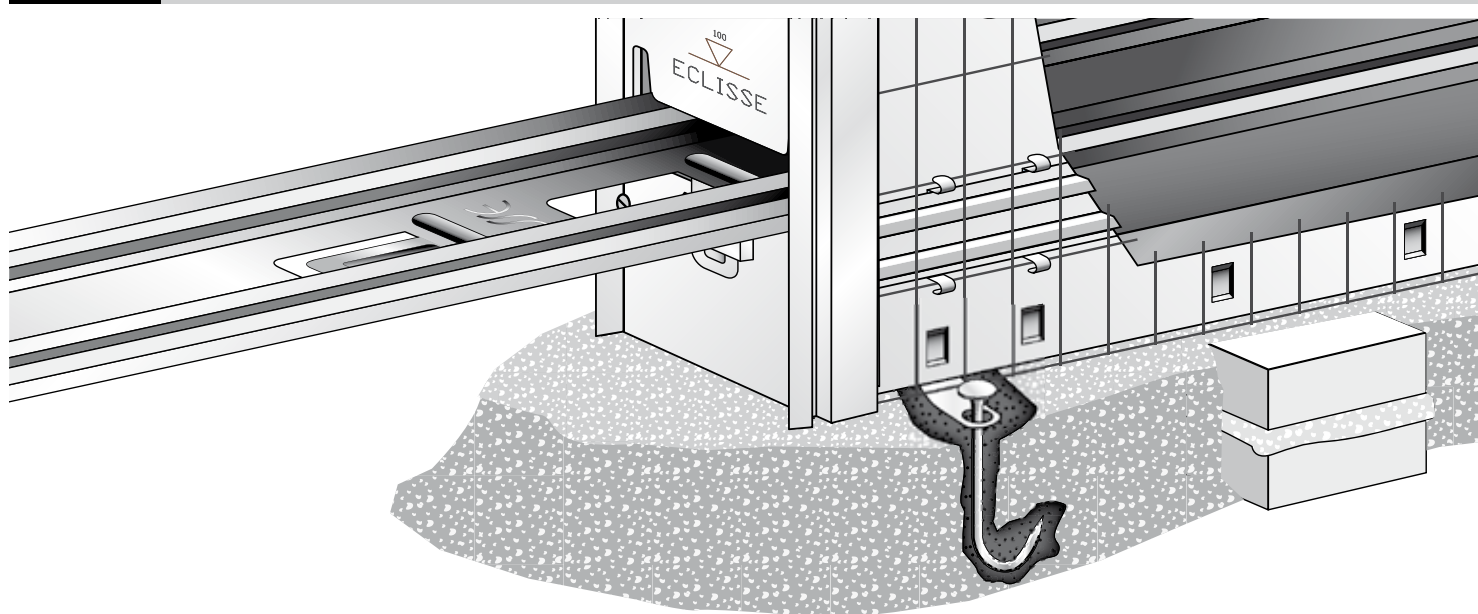


5 Insert the ALIGNMENT BAR (when supplied)



HOW TO INSTALL THE METAL FRAME

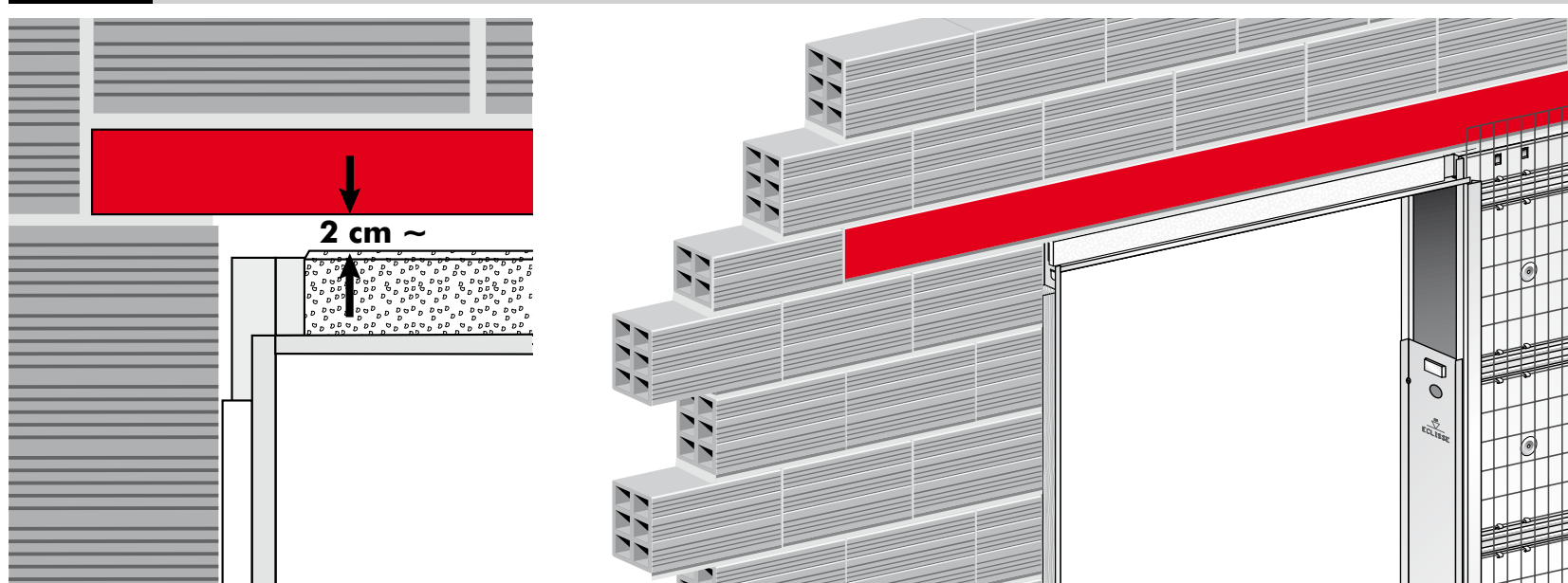
1 UNFINISHED FLOOR / FINISHED FLOOR



Unfinished floor:
Before starting the installation bend the internal pocket-to-floor brackets out of the frame, fix them to the concrete by using some screws (not supplied) as shown in the picture. Cover them with concrete.

Finished floor:
Before starting the installation bend the internal pocket-to-floor brackets out of the frame, fix them to the floor by using rawplugs (not supplied).

2 INSERT A REINFORCED CONCRETE LINTEL



Please note it is necessary to insert an adequate, reinforced concrete lintel. Leave a clearance of 1 to 2 cm between the reinforced concrete lintel and the top beam.

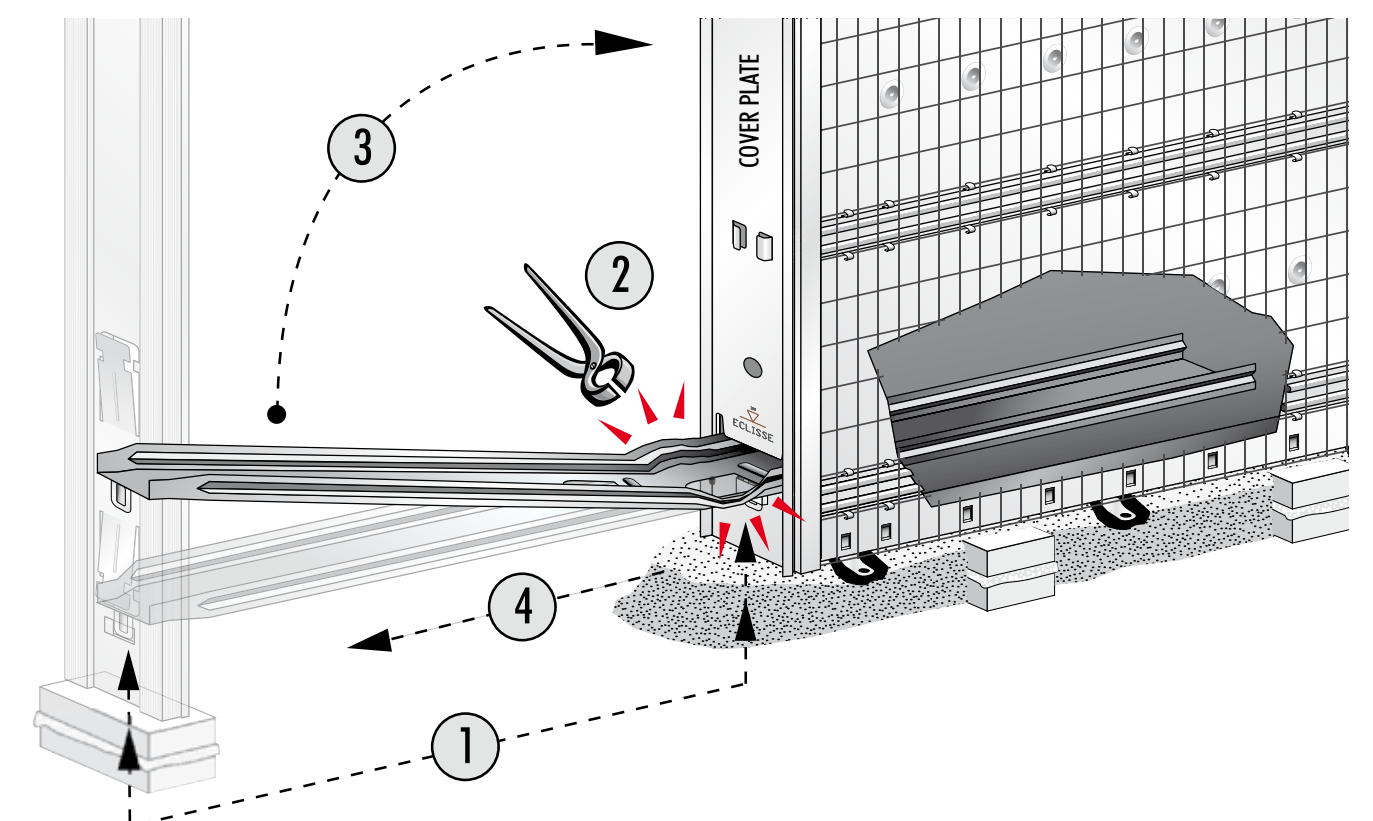
HOW TO PLASTER

PLASTER THE COUNTERFRAME CAREFULLY FOLLOWING THE STEPS LISTED IN THE SECTION

ALIGNMENT BAR REMOVAL

AFTER HAVING PLASTERED THE COUNTERFRAME, EXTRACT THE BAR AS FOLLOWS:

- 1) Bend the alignment bar vertical edges from the side of the cover plate by using pliers.
- 2) Bend the bar upwards through 90 degrees and extract it from the frame and discard.



INSTALLATION Instructions for ESTENSIONE Double sliding doors solid wall version

1 JOINT THE TWO TOP BEAMS USING BRACKETS AND SCREWS SUPPLIED (see Fig.1)

2 INSERT THE TOP BEAMS INTO THE SLIDING DOOR SYSTEM (see phase 2 model UNICO)

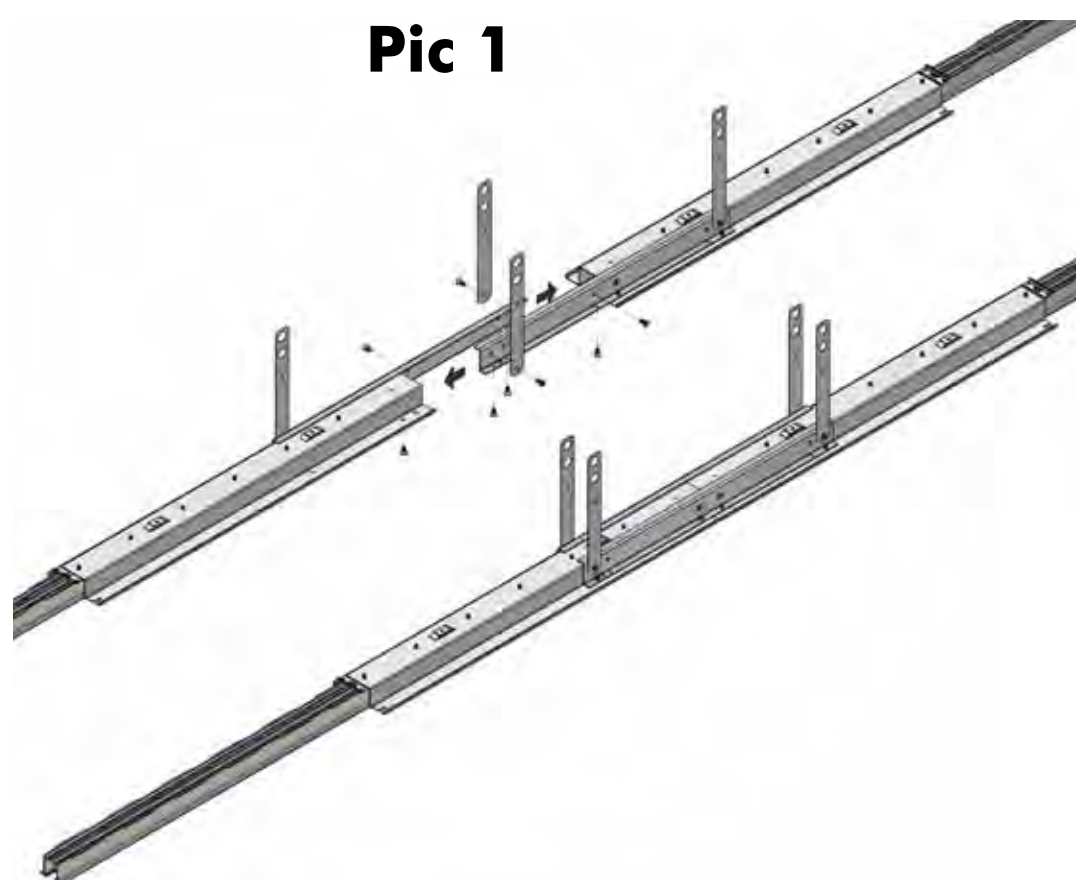
3 INSERT THE BRACER/S AS SHOWN (see phase 4 model UNICO)

4 FIX THE ANCHOR BRACKETS TO THE WALL AS SHOWN (see Fig. 2)

5 HOW TO PLASTER THE FRAMES CORRECTLY (see section: "how to plaster the frame correctly")

N.B.: If you use the joining kit to turn two single systems into a double one, please follow carefully the instructions supplied with it.

Pic 1



Pic 2

